



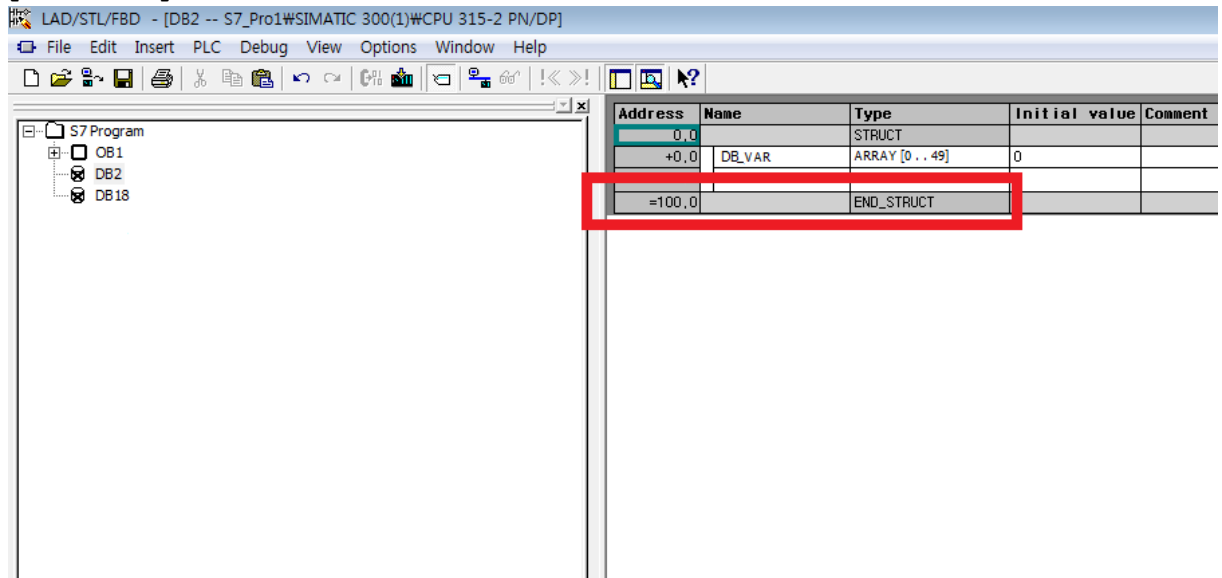
**How to communicate with SCADA via SIEMENS S7 Series PLC Ethernet Connection?**



When establishing communication blocks from SCADA, you have to make sure that the number of word communication blocks for the DB unit must be the same as that of SIEMENS PLC DB unit in order to properly communicate.

**\*CIMON SCADA and SIEMENS S7 communication DO NOT support PROFIBUS and PROFINET. Instead, Siemens S7 Ethernet Loader protocol is used.**

## [SIEMENS]



Address	Name	Type	Initial value	Comment
0,0		STRUCT		
+0,0	DE_VAR	ARRAY [0..49]	0	
=100,0		END_STRUCT		

Notice that END\_STRUCT ends at 100.

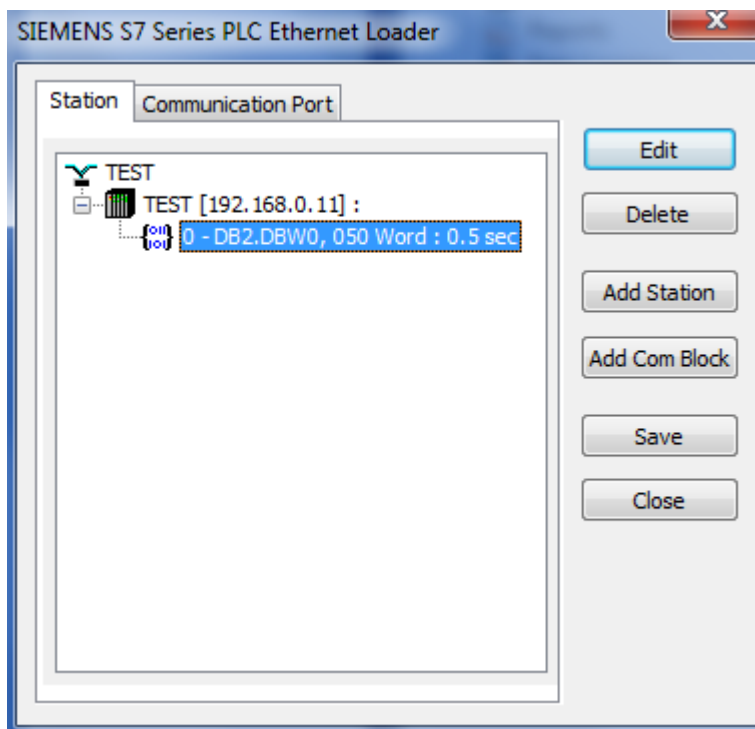
For SIEMENS, the communication unit is in Bytes.

For CIMON SCADA, the communication unit is in Word.

Therefore, when you set up the communication block from SCADA, 2 BYTE makes 1 WORD.

In this case, 100 BYTE is 50 WORD.

## [CIMON SCADA]



Register the Communication Block as DB address and 50 Word.

If larger number of Word is registered, the communication will not be connected.

If less number of Word is registered, unregistered tags will be displayed as ???? on the CimonX program.

In other words, DBW should be registered as Double Word for SIEMENS.

DBW should be registered as 1 Word for Com. Block in CIMON SCADA.

For example) When setting up 0 – 50 DBW

SIEMENS: 0 – 100

CIMON SCADA: 0 – 50