

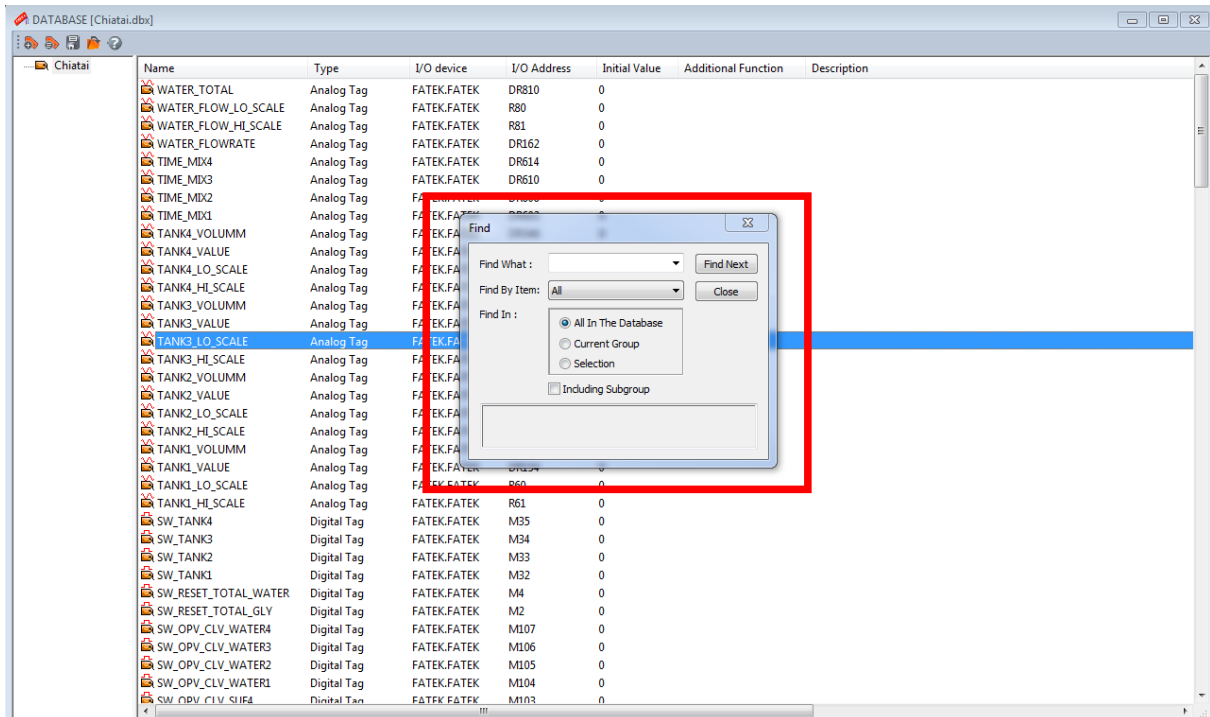


You want to check project operations without PLC. Is there a way to convert tags in the database from real to virtual and vice versa at once?



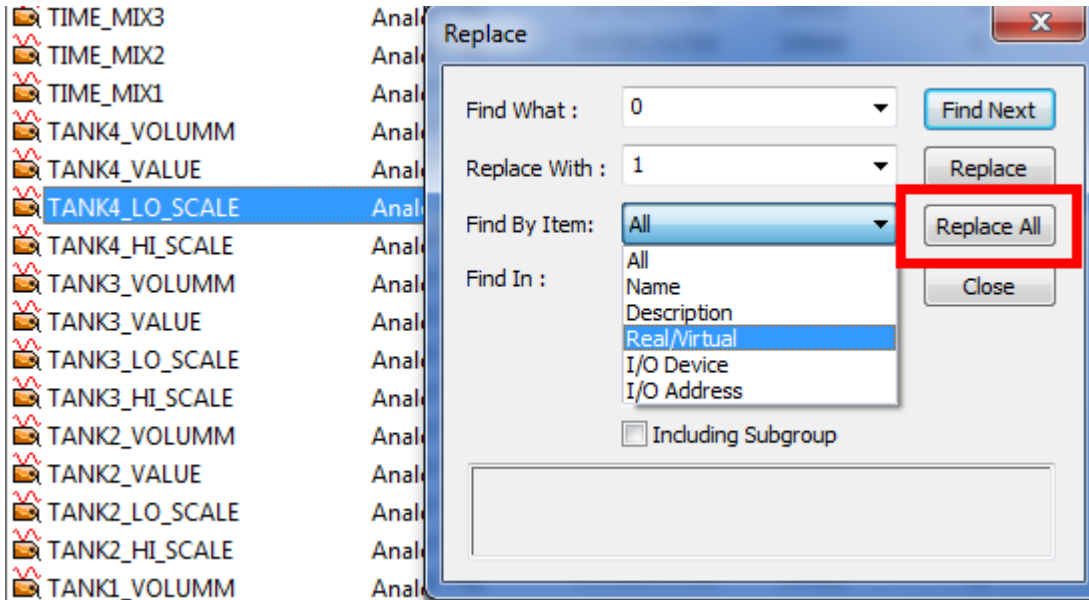
Open the Database window and press Ctrl + H to use [Replace] function. Refer to the instructions below.

Click [Tools] → [Database] → Press [Ctrl + H] → [Replace] window appears.

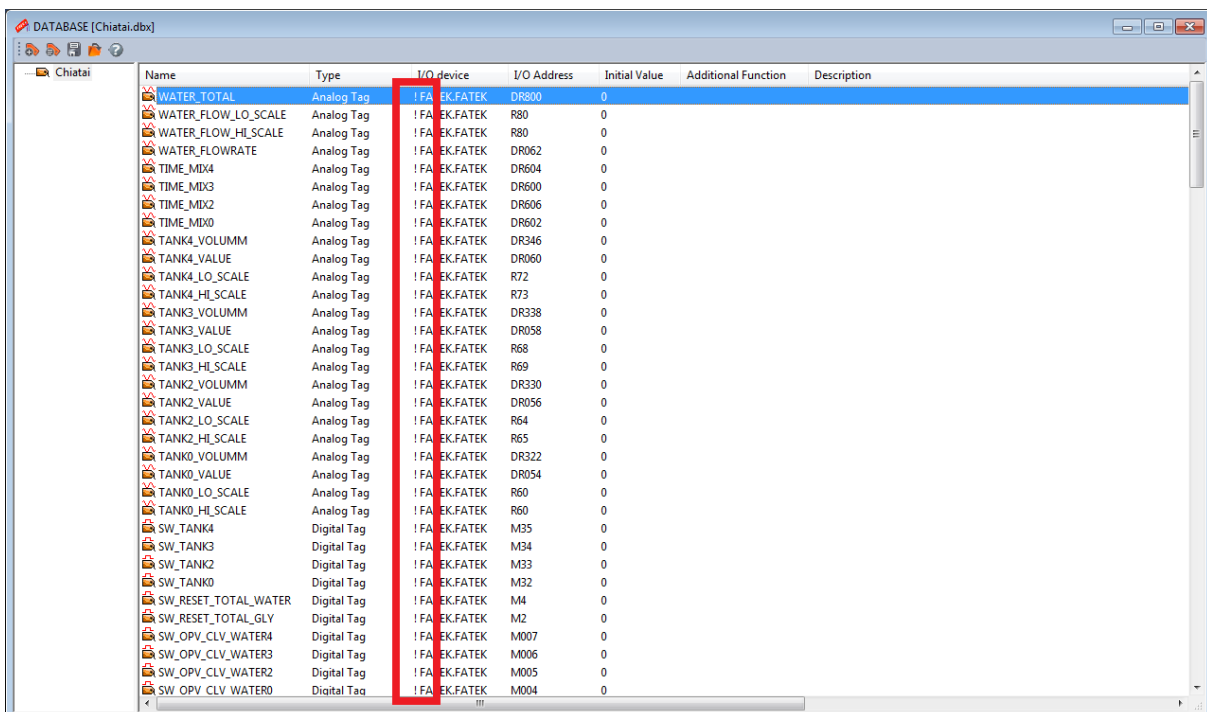


Frequently Asked Question

Enter 0 (or 1) for “Find What” and 1 (or 0) for “Replace With.”
 Select [Real/Virtual] for “Find By Item” and click [Replace All].
 *0 means virtual tags while 1 means real tags.

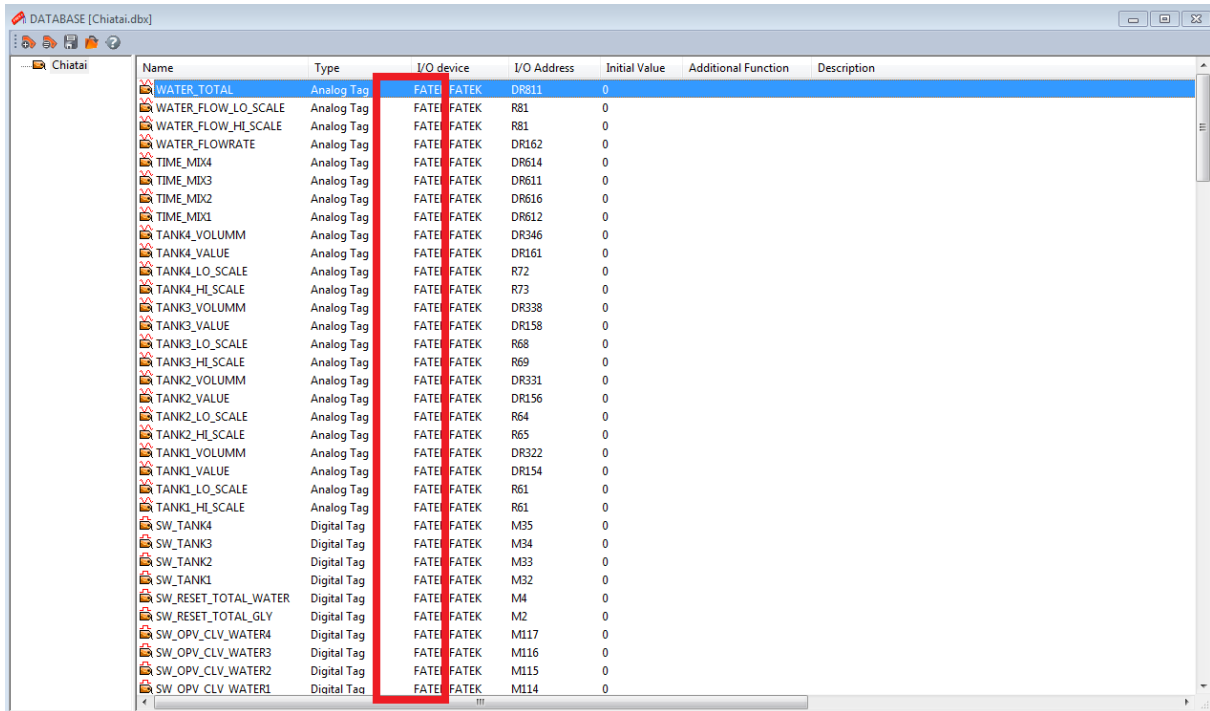


This example shows converting all of virtual tags into real tags.
 *Virtual tags are noted with [!Tag Name] as shown below.



Name	Type	I/O device	I/O Address	Initial Value	Additional Function	Description
WATER_TOTAL	Analog Tag	!FA EK.FATEK	DR800	0		
WATER_FLOW_LO_SCALE	Analog Tag	!FA EK.FATEK	R80	0		
WATER_FLOW_HI_SCALE	Analog Tag	!FA EK.FATEK	R80	0		
WATER_FLOWRATE	Analog Tag	!FA EK.FATEK	DR062	0		
TIME_MIX4	Analog Tag	!FA EK.FATEK	DR604	0		
TIME_MIX3	Analog Tag	!FA EK.FATEK	DR600	0		
TIME_MIX2	Analog Tag	!FA EK.FATEK	DR606	0		
TIME_MIX0	Analog Tag	!FA EK.FATEK	DR602	0		
TANK4_VOLUMM	Analog Tag	!FA EK.FATEK	DR346	0		
TANK4_VALUE	Analog Tag	!FA EK.FATEK	DR060	0		
TANK4_LO_SCALE	Analog Tag	!FA EK.FATEK	R72	0		
TANK4_HI_SCALE	Analog Tag	!FA EK.FATEK	R73	0		
TANK3_VOLUMM	Analog Tag	!FA EK.FATEK	DR338	0		
TANK3_VALUE	Analog Tag	!FA EK.FATEK	DR058	0		
TANK3_LO_SCALE	Analog Tag	!FA EK.FATEK	R68	0		
TANK3_HI_SCALE	Analog Tag	!FA EK.FATEK	R69	0		
TANK2_VOLUMM	Analog Tag	!FA EK.FATEK	DR330	0		
TANK2_VALUE	Analog Tag	!FA EK.FATEK	DR056	0		
TANK2_LO_SCALE	Analog Tag	!FA EK.FATEK	R64	0		
TANK2_HI_SCALE	Analog Tag	!FA EK.FATEK	R65	0		
TANK0_VOLUMM	Analog Tag	!FA EK.FATEK	DR322	0		
TANK0_VALUE	Analog Tag	!FA EK.FATEK	DR054	0		
TANK0_LO_SCALE	Analog Tag	!FA EK.FATEK	R60	0		
TANK0_HI_SCALE	Analog Tag	!FA EK.FATEK	R60	0		
SW_TANK4	Digital Tag	!FA EK.FATEK	M35	0		
SW_TANK3	Digital Tag	!FA EK.FATEK	M34	0		
SW_TANK2	Digital Tag	!FA EK.FATEK	M33	0		
SW_TANK0	Digital Tag	!FA EK.FATEK	M32	0		
SW_RESET_TOTAL_WATER	Digital Tag	!FA EK.FATEK	M4	0		
SW_RESET_TOTAL_GLY	Digital Tag	!FA EK.FATEK	M2	0		
SW_OPV_CLV_WATER4	Digital Tag	!FA EK.FATEK	M007	0		
SW_OPV_CLV_WATER3	Digital Tag	!FA EK.FATEK	M006	0		
SW_OPV_CLV_WATER2	Digital Tag	!FA EK.FATEK	M005	0		
SW_OPV_CLV_WATER0	Digital Tag	!FA EK.FATEK	M004	0		

Notice that all the virtual tags have been converted to real tags.



Name	Type	I/O device	I/O Address	Initial Value	Additional Function	Description
WATER_TOTAL	Analog Tag	FATE	FATEK DR811	0		
WATER_FLOW_LO_SCALE	Analog Tag	FATE	FATEK R81	0		
WATER_FLOW_HI_SCALE	Analog Tag	FATE	FATEK R81	0		
WATER_FLOWRATE	Analog Tag	FATE	FATEK DR162	0		
TIME_MD4	Analog Tag	FATE	FATEK DR614	0		
TIME_MD3	Analog Tag	FATE	FATEK DR611	0		
TIME_MD2	Analog Tag	FATE	FATEK DR616	0		
TIME_MD1	Analog Tag	FATE	FATEK DR612	0		
TANK4_VOLUMM	Analog Tag	FATE	FATEK DR346	0		
TANK4_VALUE	Analog Tag	FATE	FATEK DR161	0		
TANK4_LO_SCALE	Analog Tag	FATE	FATEK R72	0		
TANK4_HI_SCALE	Analog Tag	FATE	FATEK R73	0		
TANK3_VOLUMM	Analog Tag	FATE	FATEK DR338	0		
TANK3_VALUE	Analog Tag	FATE	FATEK DR158	0		
TANK3_LO_SCALE	Analog Tag	FATE	FATEK R68	0		
TANK3_HI_SCALE	Analog Tag	FATE	FATEK R69	0		
TANK2_VOLUMM	Analog Tag	FATE	FATEK DR331	0		
TANK2_VALUE	Analog Tag	FATE	FATEK DR156	0		
TANK2_LO_SCALE	Analog Tag	FATE	FATEK R64	0		
TANK2_HI_SCALE	Analog Tag	FATE	FATEK R65	0		
TANK1_VOLUMM	Analog Tag	FATE	FATEK DR322	0		
TANK1_VALUE	Analog Tag	FATE	FATEK DR154	0		
TANK1_LO_SCALE	Analog Tag	FATE	FATEK R61	0		
TANK1_HI_SCALE	Analog Tag	FATE	FATEK R61	0		
SW_TANK4	Digital Tag	FATE	FATEK M35	0		
SW_TANK3	Digital Tag	FATE	FATEK M34	0		
SW_TANK2	Digital Tag	FATE	FATEK M33	0		
SW_TANK1	Digital Tag	FATE	FATEK M32	0		
SW_RESET_TOTAL_WATER	Digital Tag	FATE	FATEK M4	0		
SW_RESET_TOTAL_GLY	Digital Tag	FATE	FATEK M2	0		
SW_OPV_CLV_WATER4	Digital Tag	FATE	FATEK M117	0		
SW_OPV_CLV_WATER3	Digital Tag	FATE	FATEK M116	0		
SW_OPV_CLV_WATER2	Digital Tag	FATE	FATEK M115	0		
SW_OPV_CLV_WATER1	Digital Tag	FATE	FATEK M114	0		