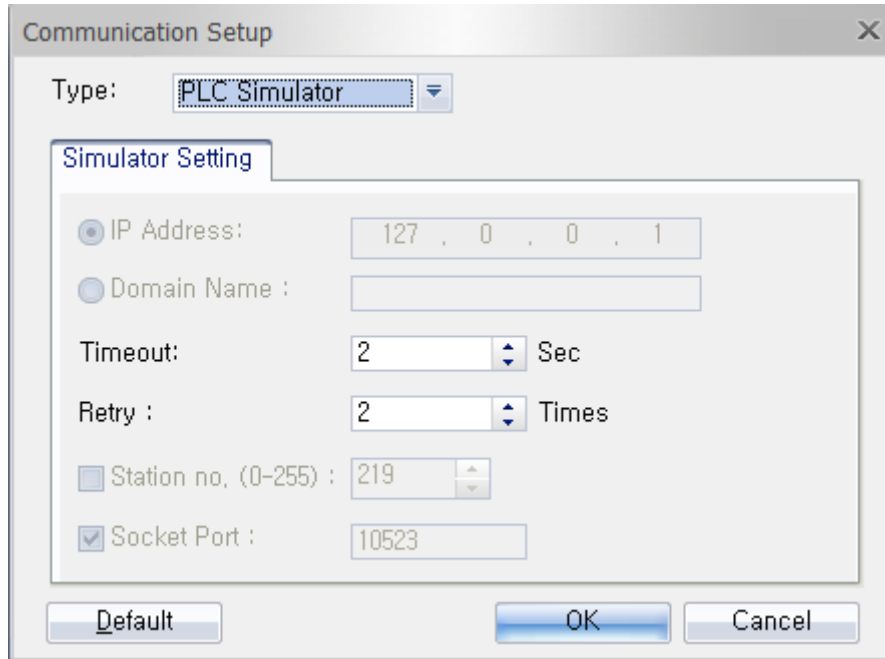
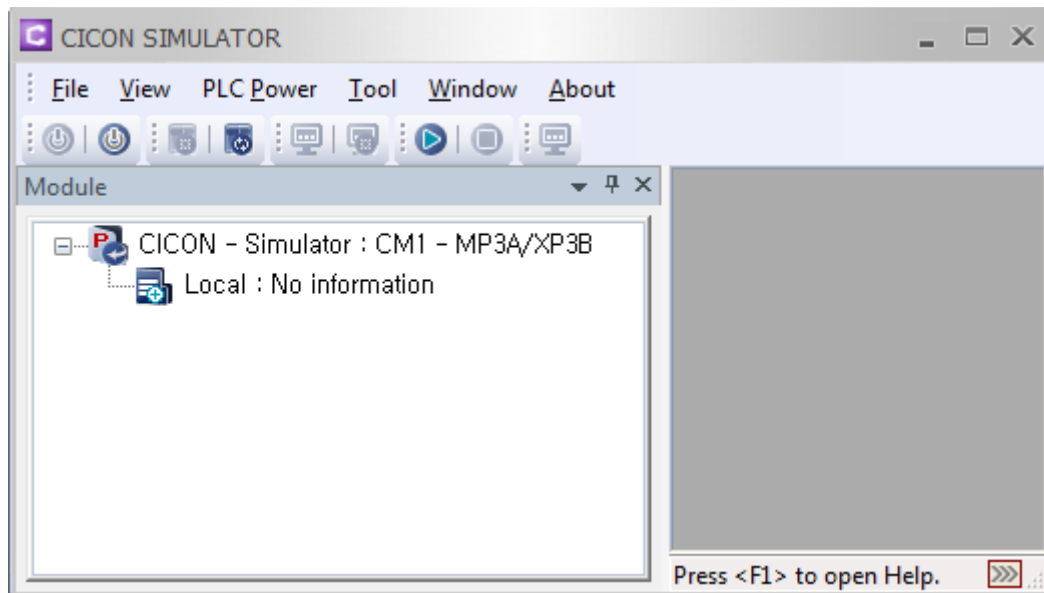


1.CICION Simulator Setting

1. After creating new project, click [Tool] → [Connection Setup] and then select 'PLC Simulator' at the Type.

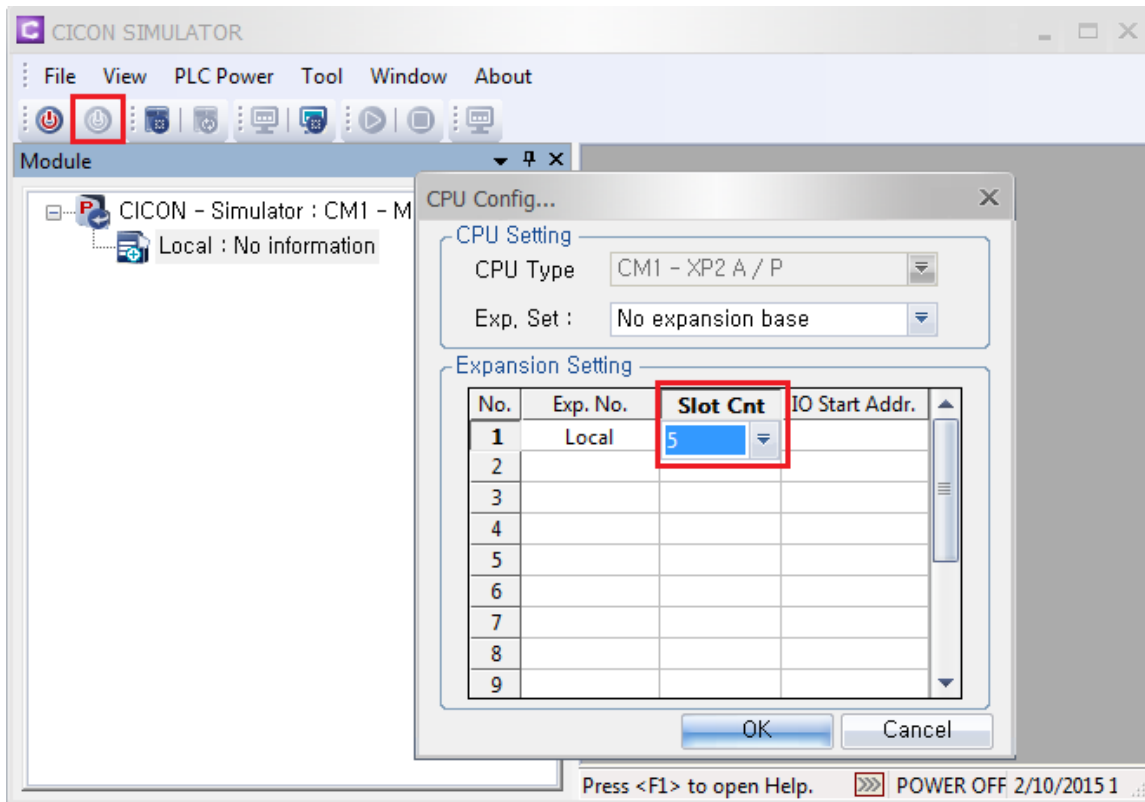


2. After making logic ladder, click [Tool] → [Run PLC Simulator]



CICON SIMULATOR USER MANUAL

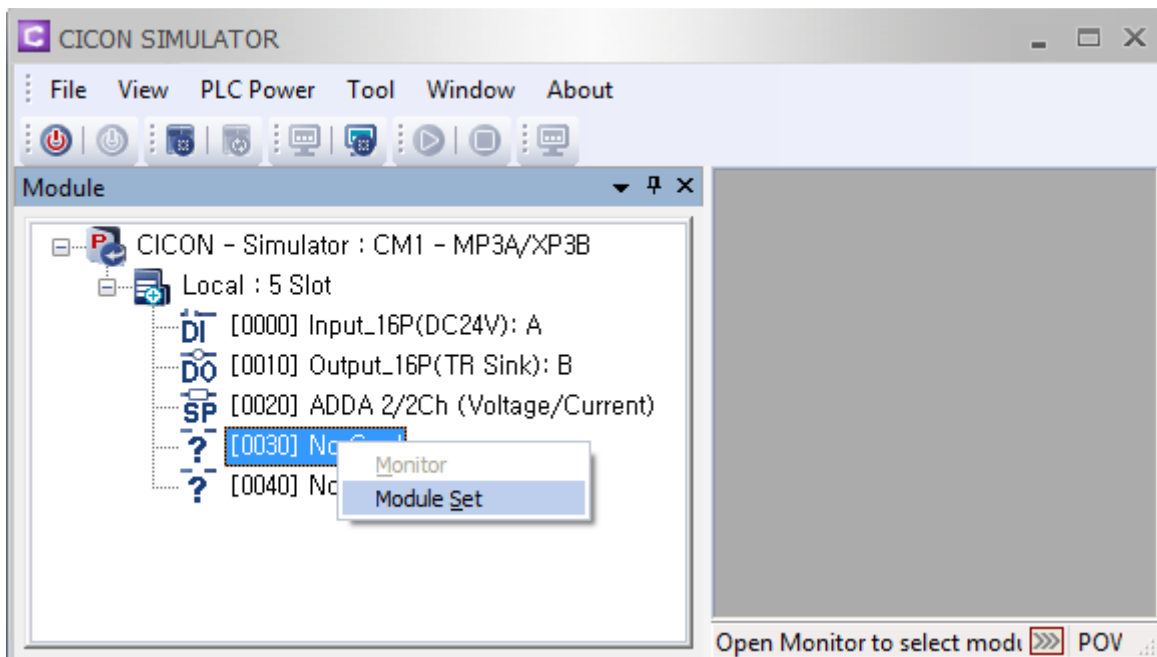
3. Click 'PLC OFF' and click [Tool] → [PLC TYPE] to select modules.



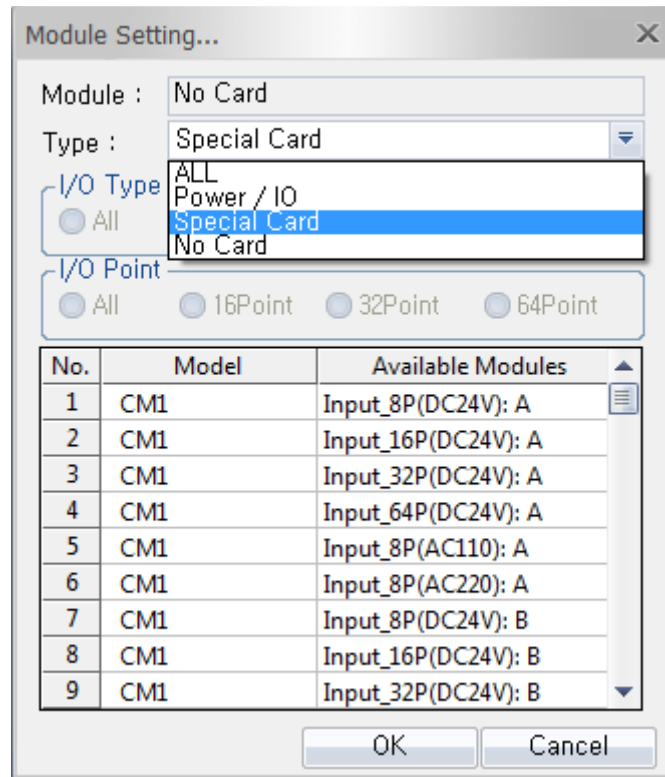
If you have expansion Base, select number of Base at the Exp. Set.

According to number of module, select slot number.

4. Put your mouse on the slot and click right button of mouse and Module Set.

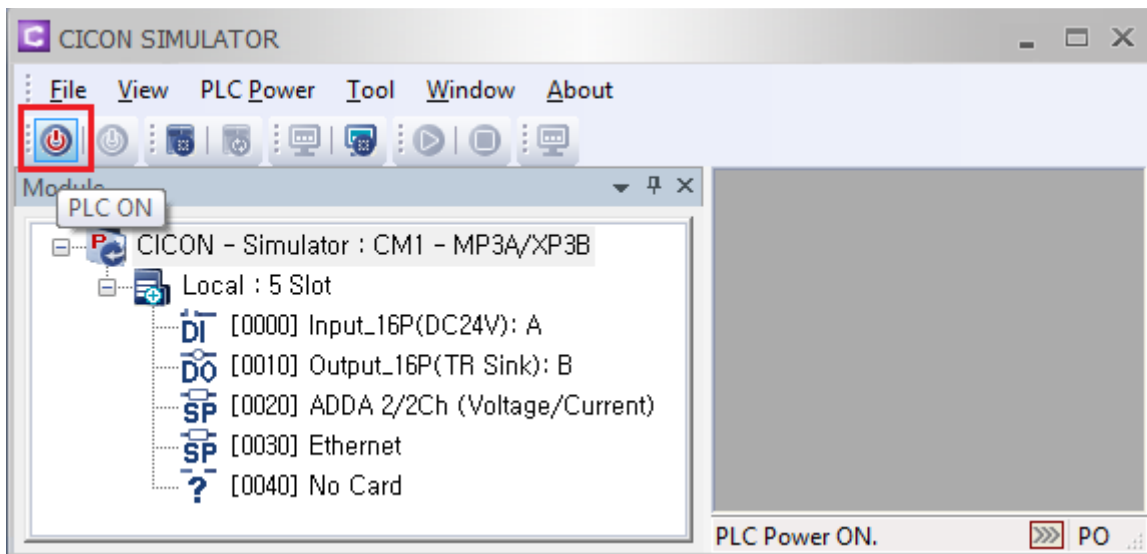


- Select a module Type and Model.



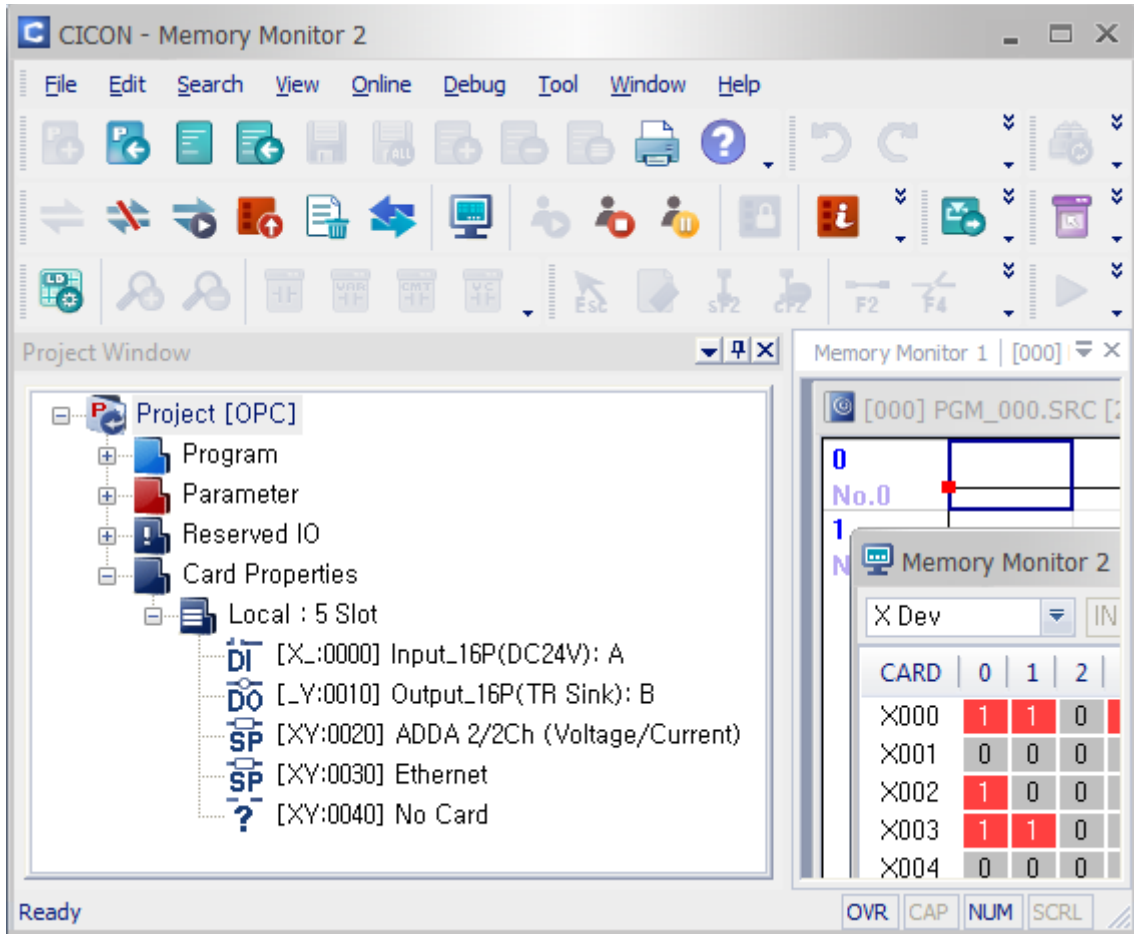
- After selecting modules, click 'PLC ON' and then click [Online] → [Connect] at the CICON.

Click [Download] to download all configuration and logic ladder to Simulator.



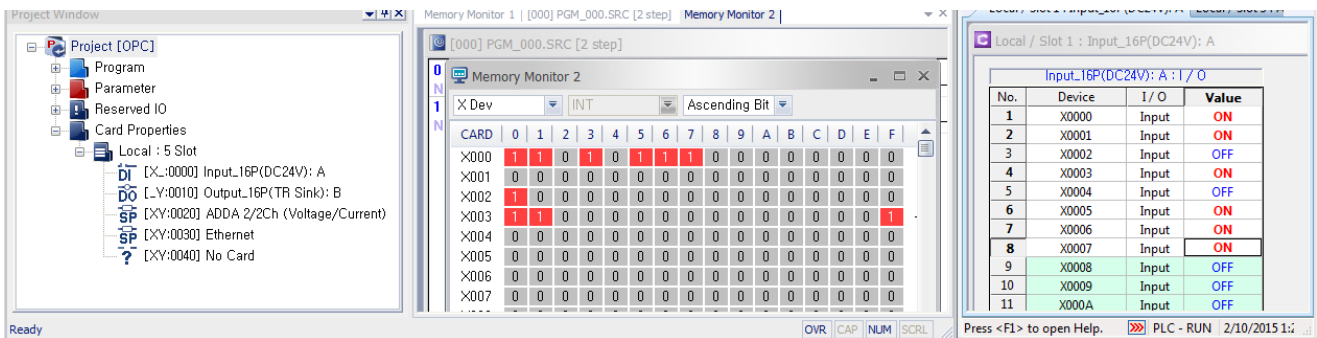
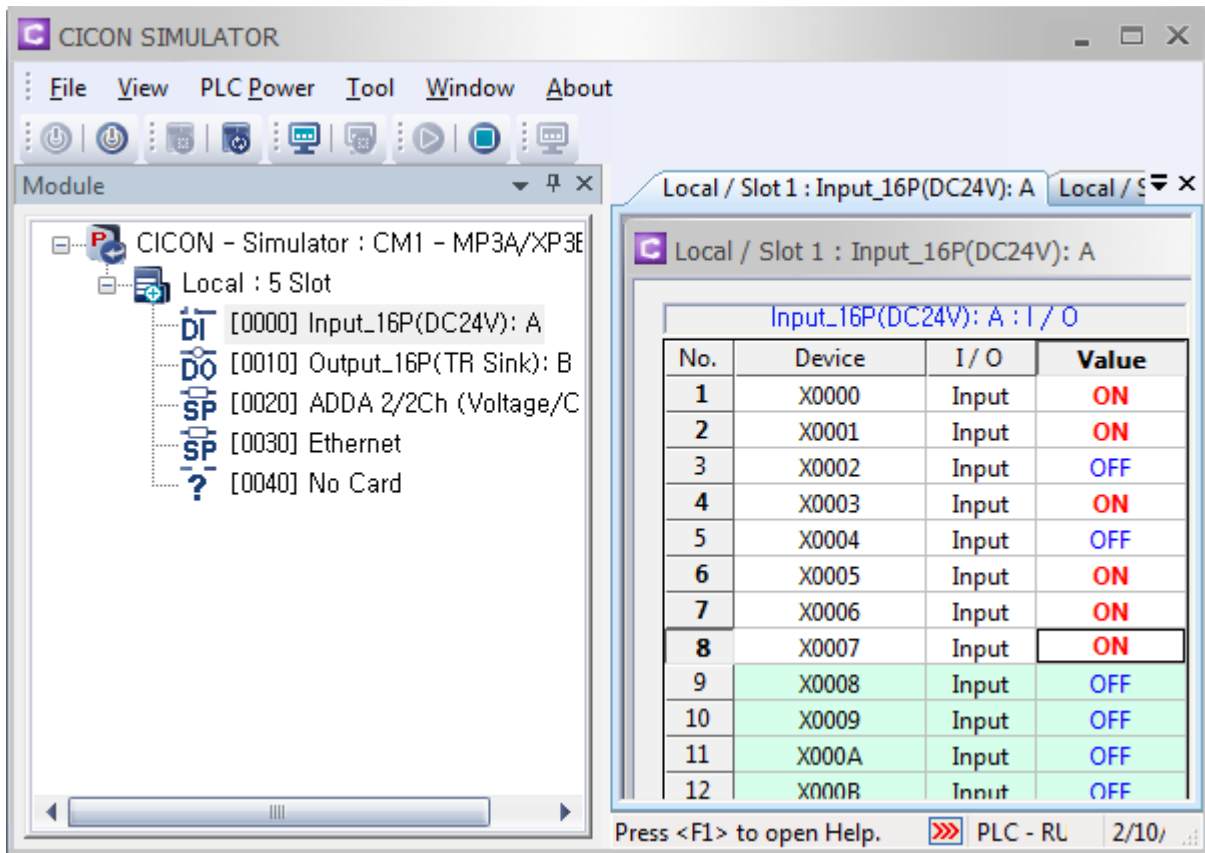
CICON SIMULATOR USER MANUAL

7. If download is completed, Card Properties has the same configuration with Simulator.



CICON SIMULATOR USER MANUAL

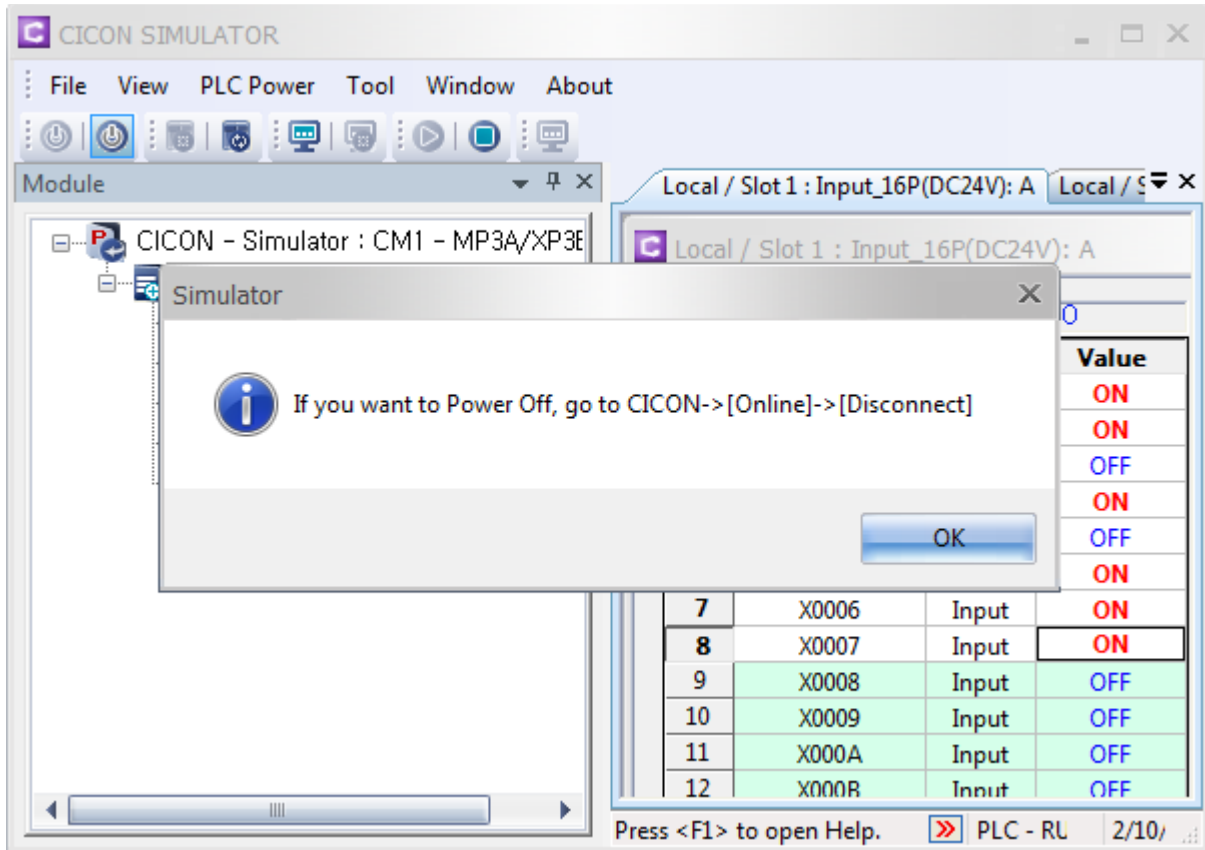
8. If you double click module at the Simulator, you can see the memory monitor just like CICON.



CICON SIMULATOR USER MANUAL

9. In order to turn Simulator off, Disconnect CICON from Simulator first.

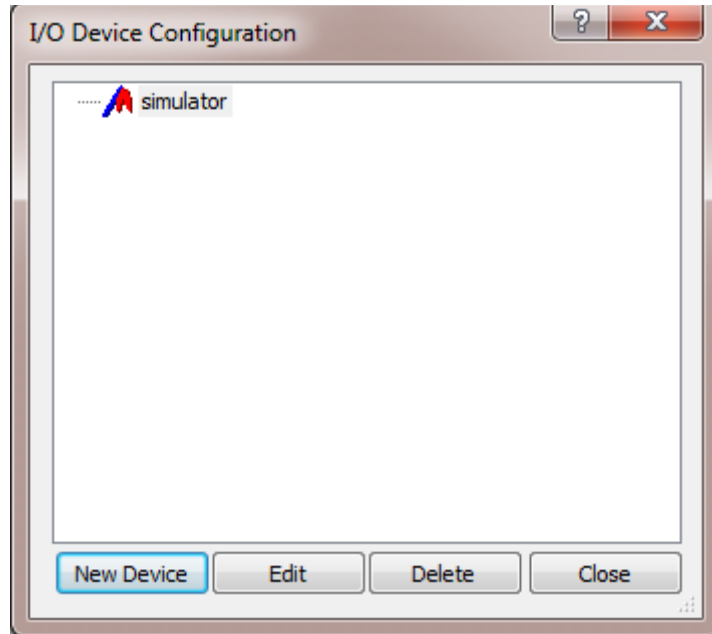
Click [Online] → [Disconnect] at the CICON.



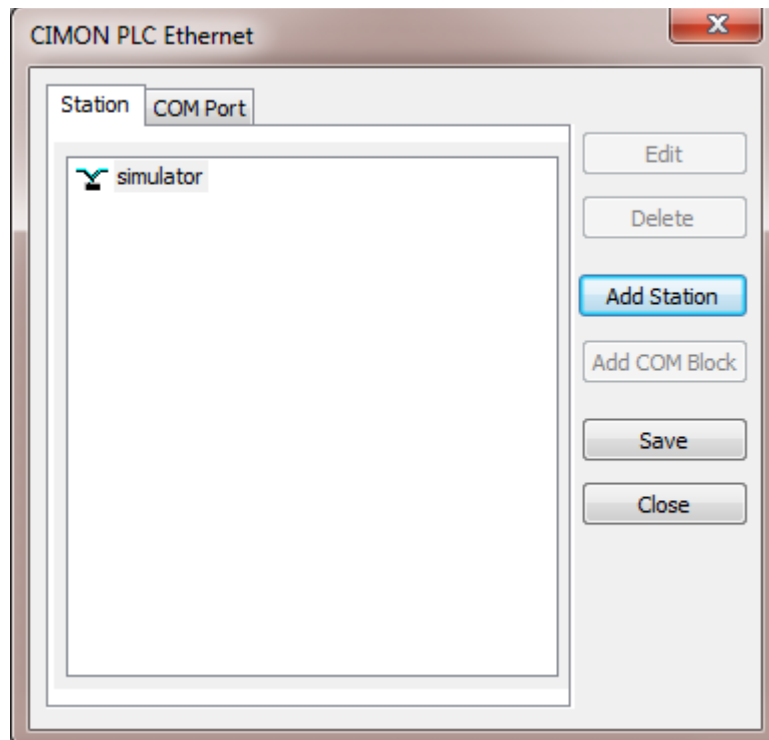
2. SCADA <CIMON D> Communication Setting

In order to connect UltimateAccess to CICON Simulator, 'CIMON-PLC Ethernet' must be set at the I/O Device.

1. Click [Tools] → [I/O Device] and then click [New Device]



2. Write a device name and select 'CIMON-PLC Ethernet'.
3. Click [Add Station]



CICON SIMULATOR USER MANUAL

4. Write a Station name and select the same PLC CPU type that you set up at the CICON.

Write IP address 127.0.0.1 (**127.0.0.1 is loopback IP address of CICON and Simulator**)

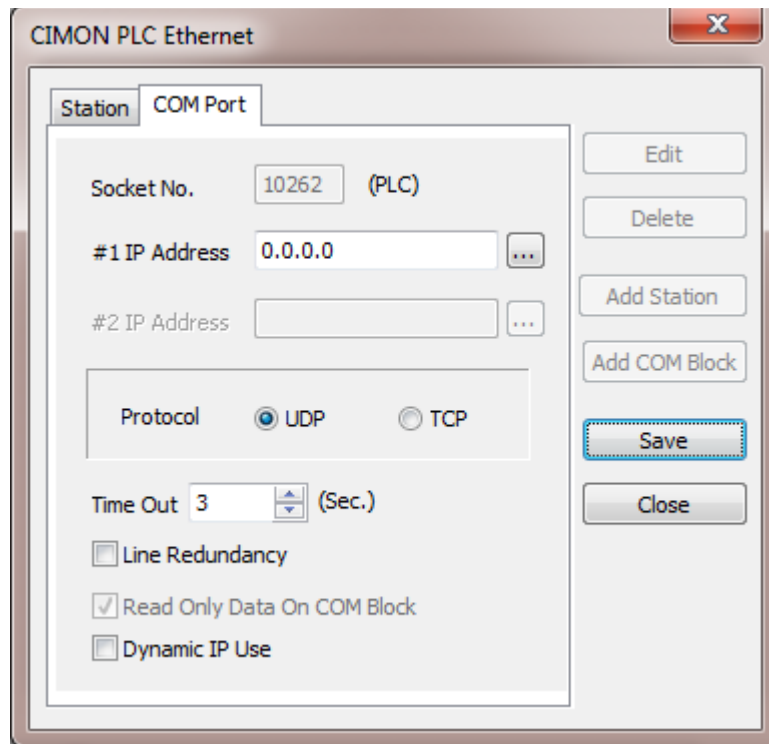
The image shows a 'Station' configuration dialog box with the following fields and values:

- Station Name: ST1
- PLC CPU: CM1 - XP
- Using Dynamic IP (Domain Name):
- Socket No.: 10262 (Gateway Receive Port)
- Using Dynamic IP (CICON DDNS):
- DDNS Server #1: IP Address (empty), Socket No. 20266
- DDNS Server #2: IP Address (empty), Socket No. 20266
- #1 IP Address: 127.0.0.1 (highlighted with a red box)
- #1-2: (empty)
- #2 IP Address: (empty)
- #2-2: (empty)
- Description: (empty text area)

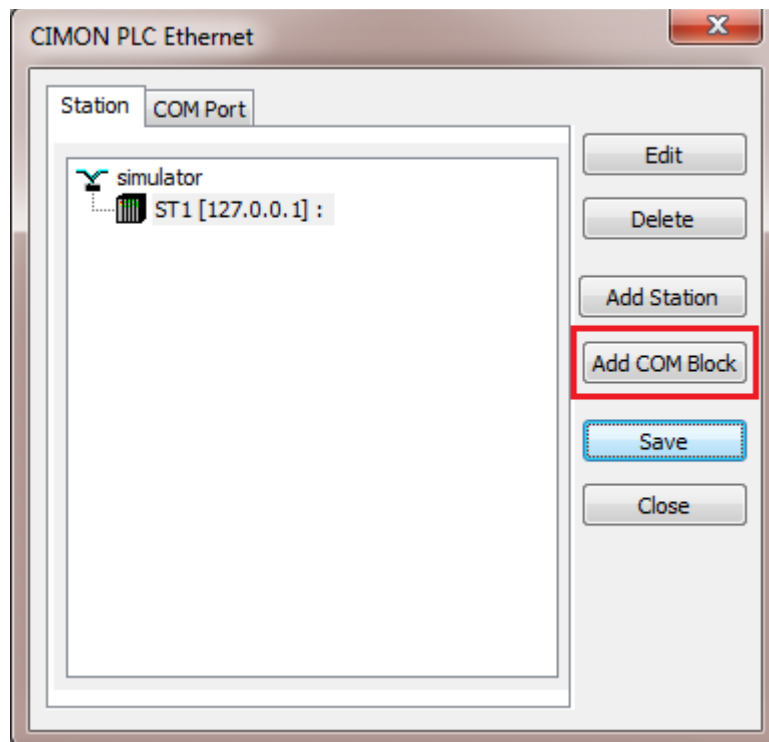
Buttons: Ok, Cancel

CIMON SIMULATOR USER MANUAL

5. Click [COM Port] and write 0.0.0.0 at #1 IP Address and then click 'Save'.



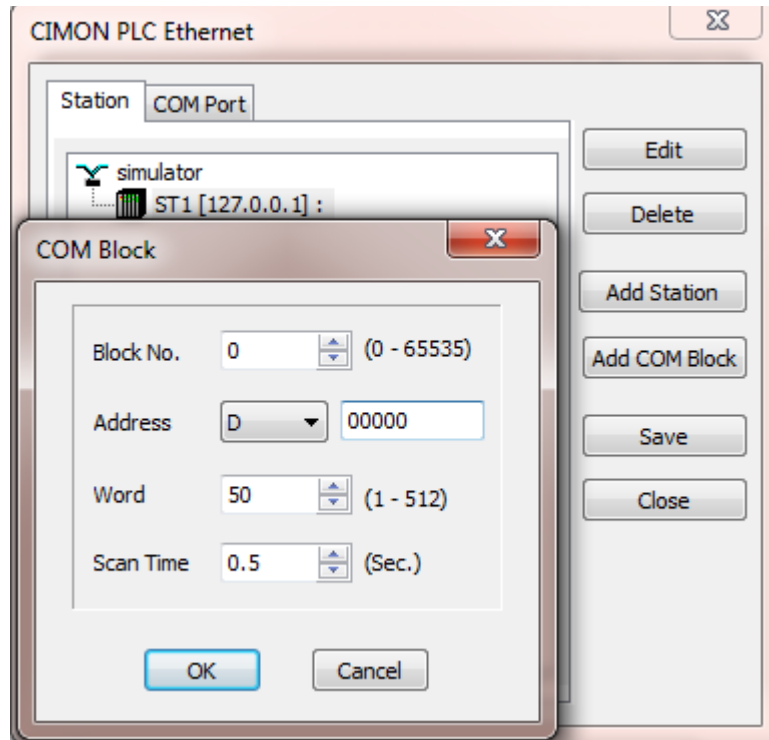
6. Click 'Add COM Block' at the Station.



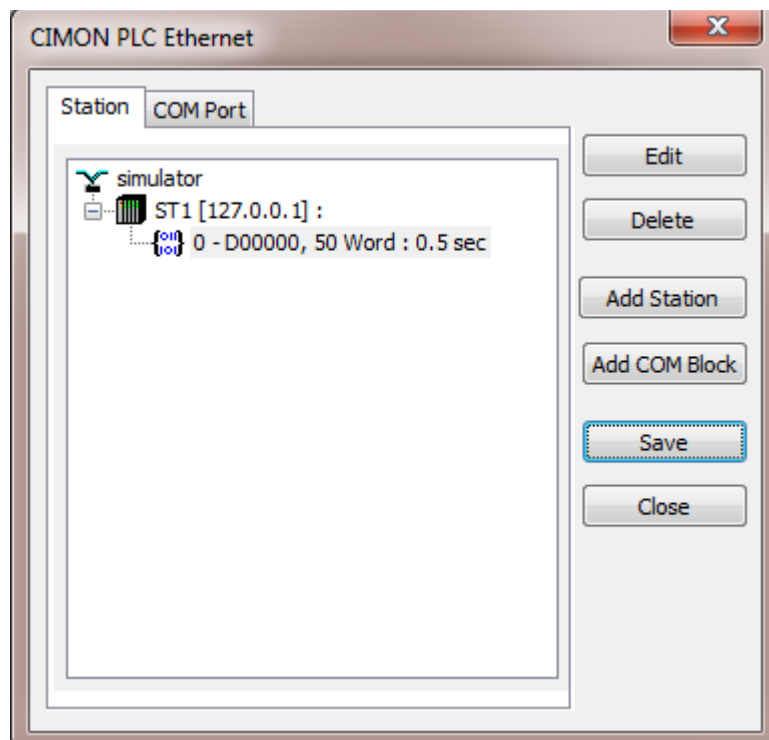
CIMON SIMULATOR USER MANUAL

- Write '0' at the Block number and select Address type and number of Word.

Example: ('D' is Word device and Word 50 means that address D0 to D49 can be used.)

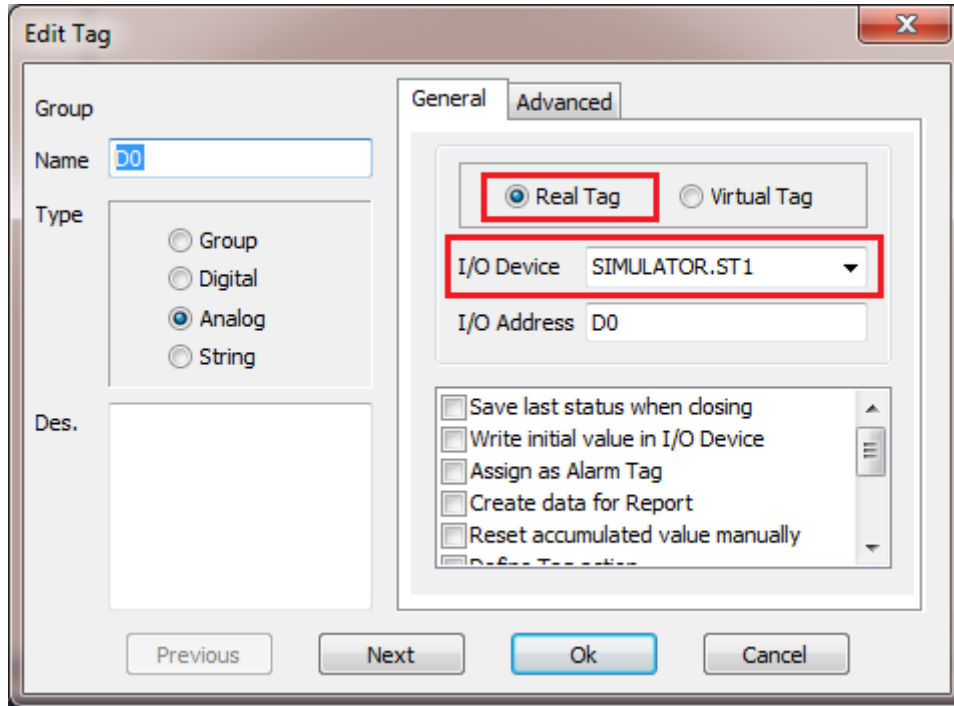


- Click [Save].



- After communication setup, register tag at the DATABASE.

(Select I/O Device and Tag should be Real Tag)



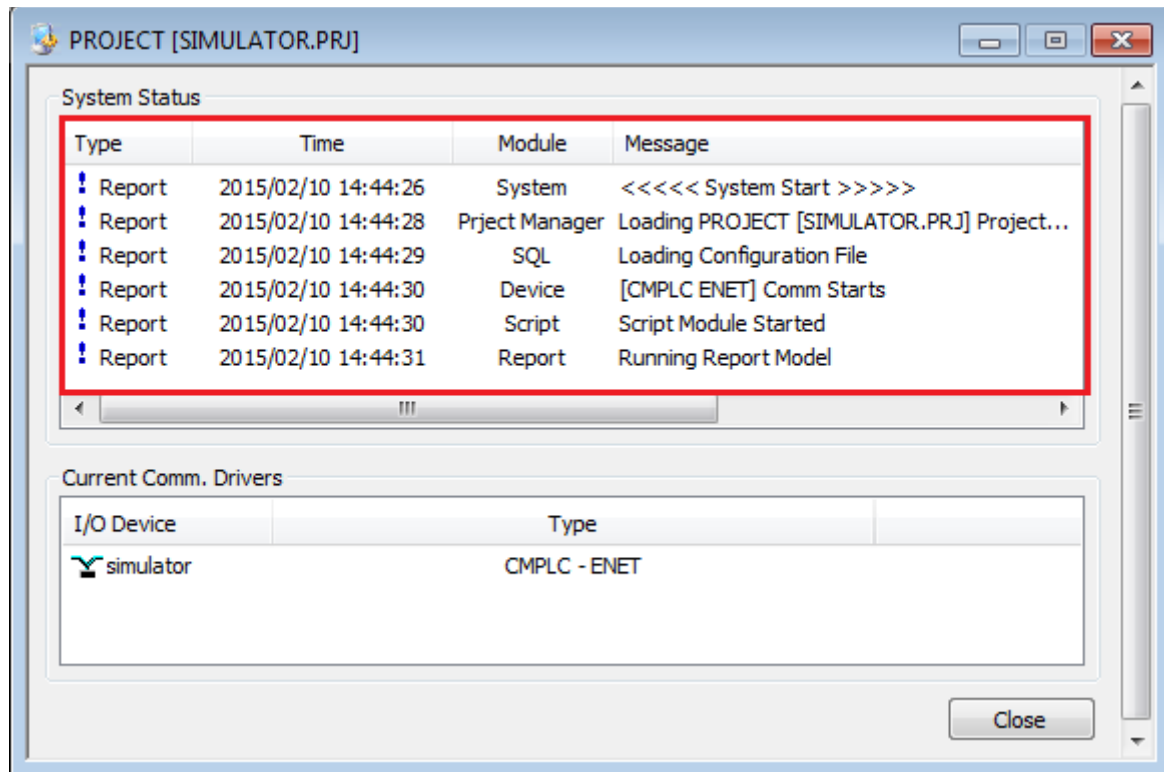
- After saving project, Run CimonX to communicate to CICON Simulator.

Click [tools] → [Run Project]

In order to check the communication status, click [View] → [Network Status] or [System Status] at the CimonX.

Node	Device	Station	Num...	Desc.	Status	Readi...	Readi...	Read(%)	Writi...	Writing...	Written(%)
CIMON					Normal	61	0	100	0	0	0
└─ simulator					Normal	61	0	100	0	0	0
└─ ST1			0.0.0.0 ...		Normal	61	0	100	0	0	0

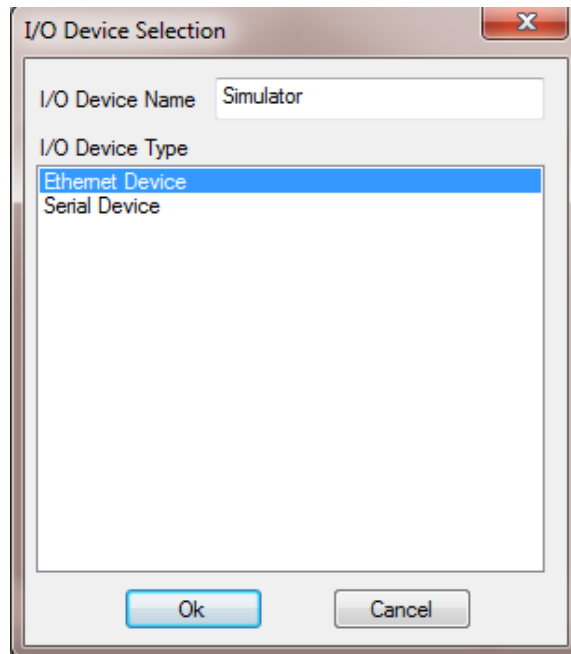
CICON SIMULATOR USER MANUAL



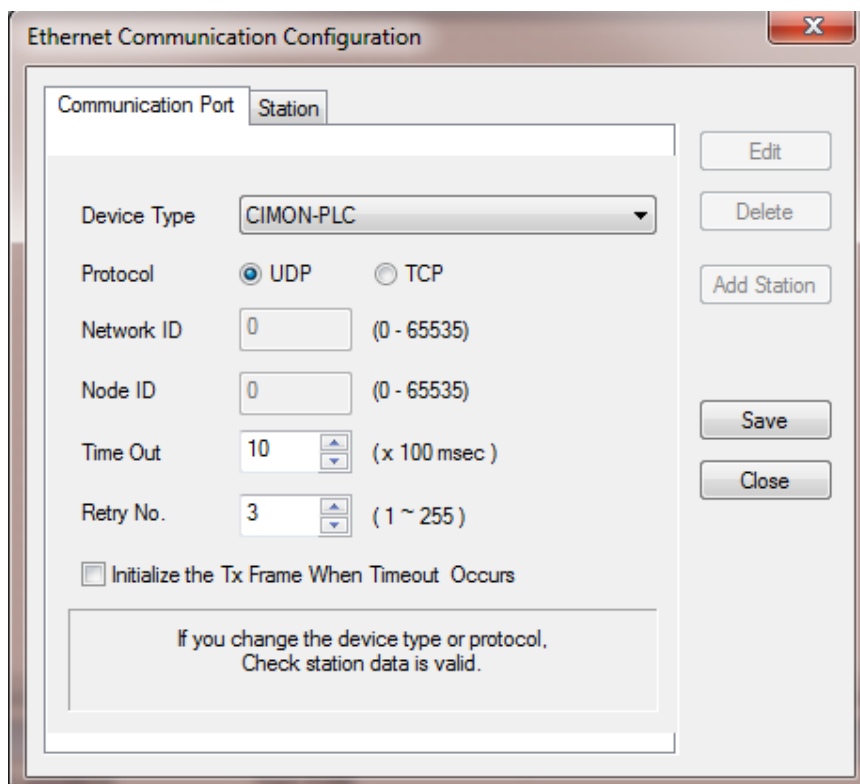
3. XPANEL Designer Communication Setting

In order to connect XpanelDesigner to CICON Simulator, 'CIMON-PLC' must be set at the I/O Devices.

1. Click [Tools] → [I/O Devices] and then click [New Device].



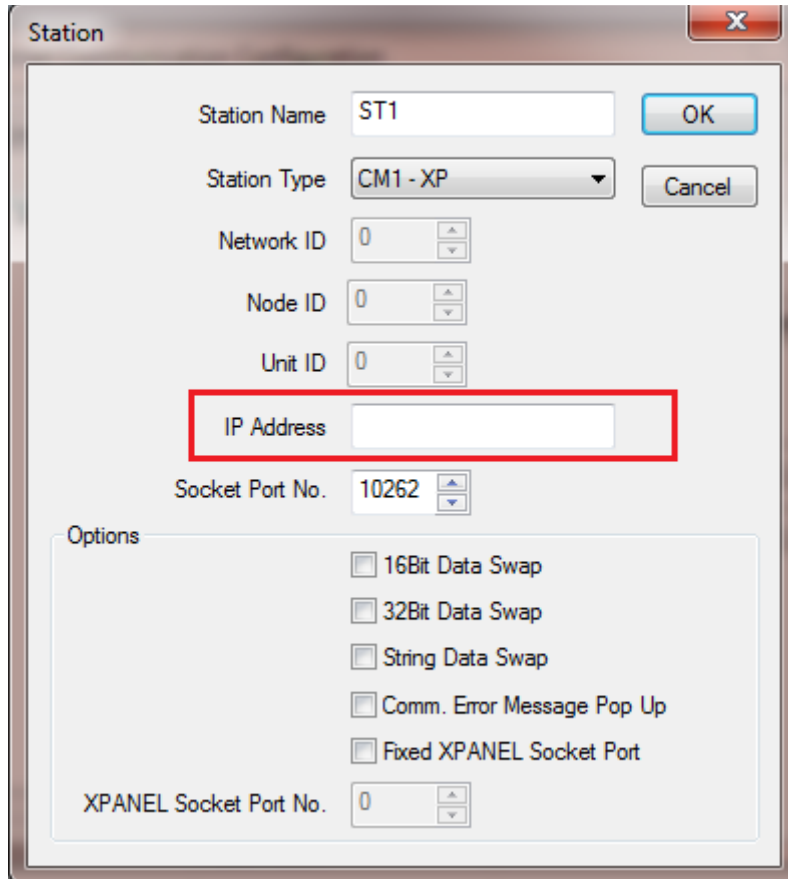
2. Select 'CIMON-PLC' at the Device Type and click 'Station' to add station.



3. Click 'Add Station' and write Station Name and select the Station Type(CPU) that you set up at CICON.

Write IP Address of PC which CICON Simulator is running.

(Socket Port No. 10262 is default of HMI protocol for CICON Simulator.)



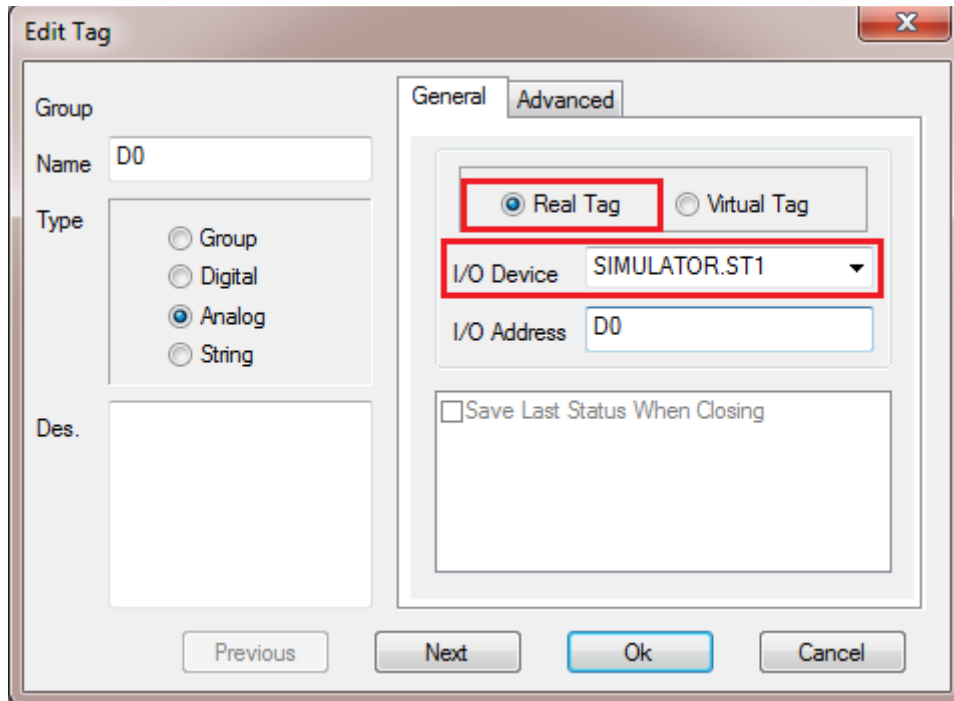
The screenshot shows a 'Station' configuration dialog box with the following fields and options:

- Station Name: ST1
- Station Type: CM1 - XP
- Network ID: 0
- Node ID: 0
- Unit ID: 0
- IP Address: (highlighted with a red box)
- Socket Port No.: 10262
- Options:
 - 16Bit Data Swap
 - 32Bit Data Swap
 - String Data Swap
 - Comm. Error Message Pop Up
 - Fixed XPANEL Socket Port
- XPANEL Socket Port No.: 0

4. Click 'Save'.

5. After communication setup, register tag at the DATABASE.

(Select I/O Device and Tag should be Real Tag)



6. Save the project and download it to XPANEL.

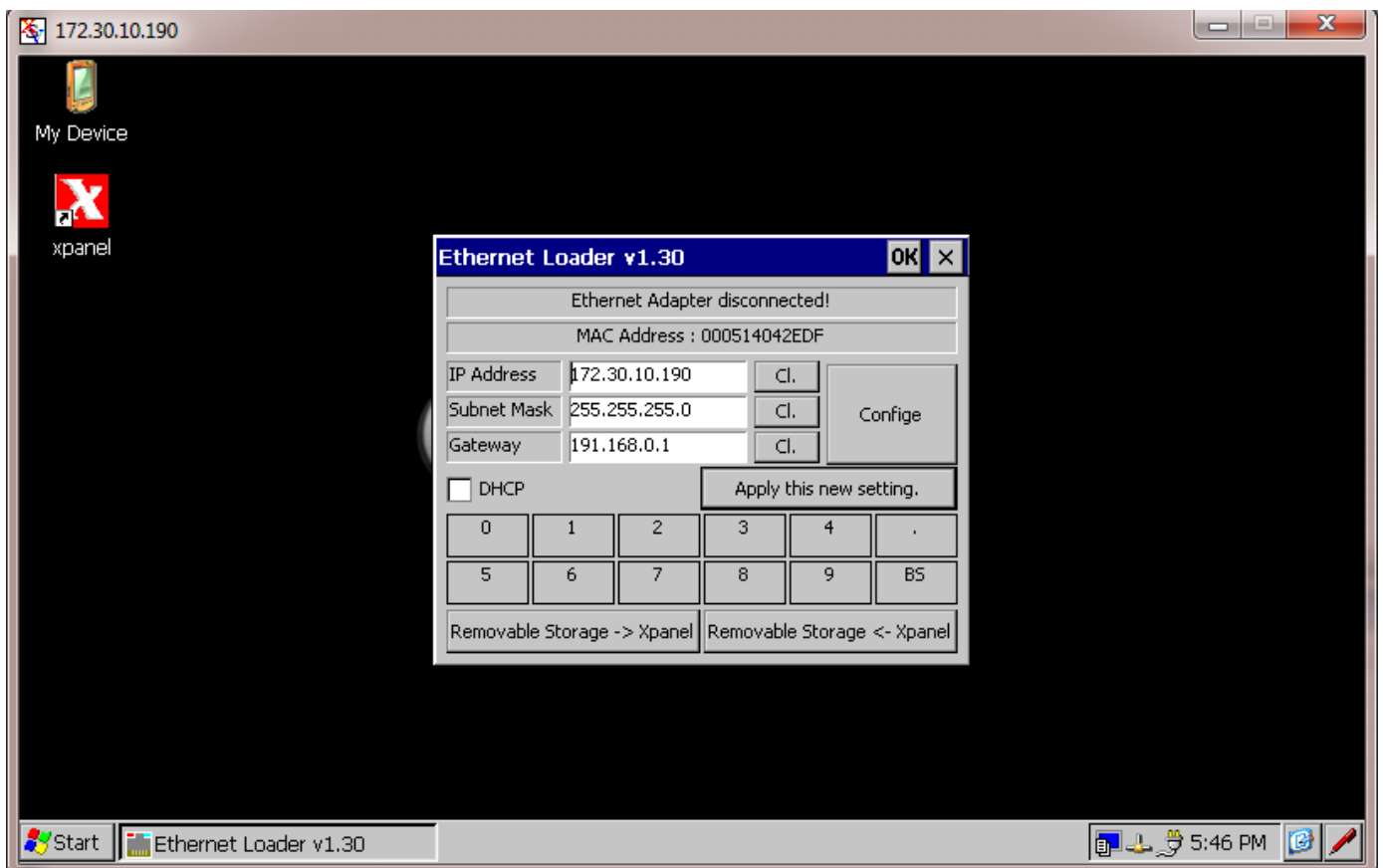
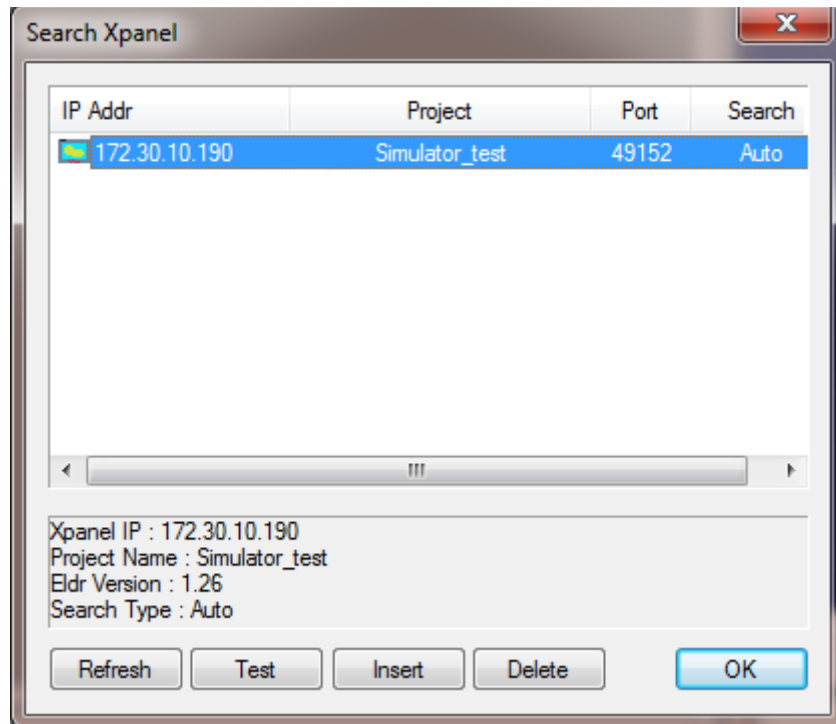
Click [Online] → [Download to XPANEL(PC → XPANEL)]

CICON SIMULATOR USER MANUAL

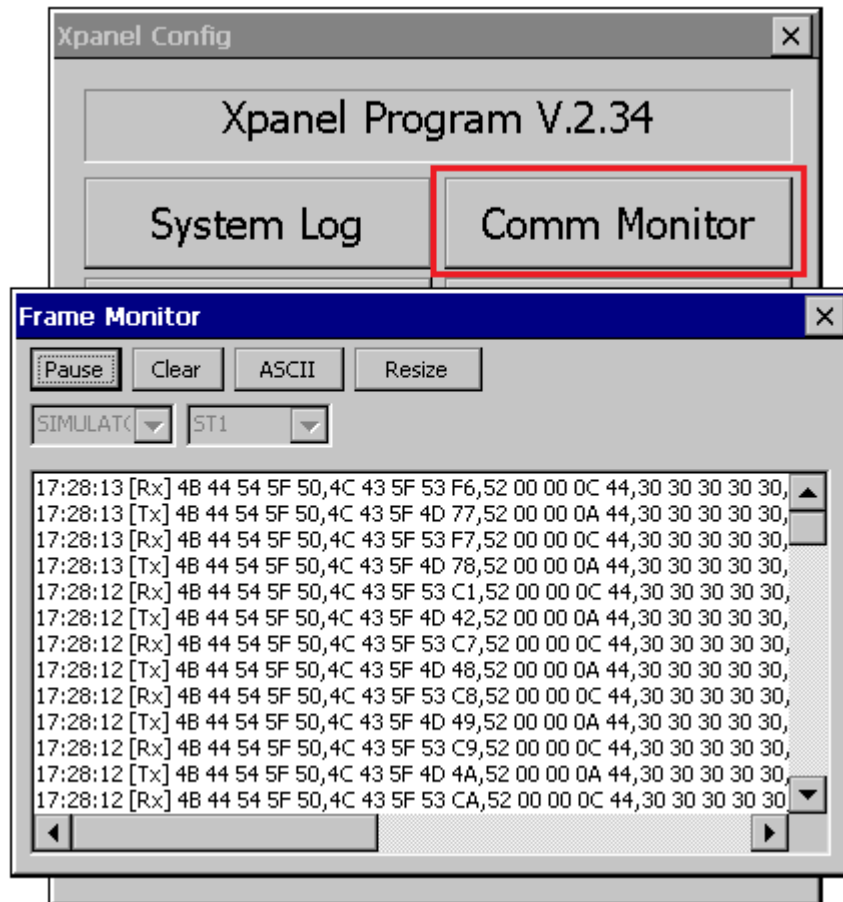
7. You can use USB or Ethernet type to download.

If you select 'Ethernet', click 'Select Xpanel' button to select IP Address of XPANEL which will be used.

You can find out XPANEL IP Address at the 'Ethernet Loader' on the XPANEL screen.



8. After downloading project, you can find out communication status at the XPANEL device(Comm Monitor)



If communication between XPANEL and Simulator is ok, TX and RX appear on the Frame Monitor one by one.

CICON SIMULATOR USER MANUAL

9. You can also change the device value at the CICON and its value shows right on the XPANEL screen.

