

# CIMON PC SERIES

*CIMON-iNT(iNP) Series*

## User Manual



THIS DEVICE COMPLIES WITH PART 15 OF THE FCC RULES. OPERATION IS SUBJECT TO THE FOLLOWING TWO CONDITIONS: (1) THIS DEVICE MAY NOT CAUSE HARMFUL INTERFERENCE, AND (2) THIS DEVICE MUST ACCEPT ANY INTERFERENCE RECEIVED, INCLUDING INTERFERENCE THAT MAY CAUSE UNDESIRABLE OPERATION.



## Caution

**To use this product correctly, it is absolutely required to read the product descriptions before use.**

1. For your safety and the safe operation of this product, please read this manual before using the product. The manual is subject to change without notice.
2. Please review the product specification in this manual to determine the suitability of this product for its intended use.
3. For your safety, only qualified persons should perform electrical and wiring attachments to this product.

### **FCC RF INTERFERENCE STATEMENT**

This equipment has been tested and found to comply with the limits for a Class A digital device, pursuant to part 15 of the FCC Rules. These limits are designed to provide reasonable protection against harmful interference when the equipment is operated in a commercial environment. This equipment generates, uses, and can radiate radio frequency energy and, if the equipment is not installed and used in accordance with the instruction manual, it may cause harmful interference to radio communications. Operation of this equipment in a residential area is likely to cause harmful interference in which case the user will be required to correct the interference at his own expense.

# CONTENTS

Essential Safety Precautions .....	4
General Safety Precautions .....	8
Package Contents .....	9
1. Dimension .....	10
2. Interfaces .....	11
3. Installation .....	14
4. Wiring & Power Supply Caution .....	17
5. Grounding Caution .....	18
6. Specification .....	19
7. Environmental Specifications .....	20
8. UWF : Unified Write Filter .....	21
9. Calibration Setting .....	22
10. Multi-Monitor Setting .....	24
Products Warranty .....	28
Memo .....	31

# Essential Safety Precautions



## Precautions for design

- Do not draw a graphic object that can be hazardous to the operator or device. If the product is damaged while output signal remain ON or OFF, fatal accident may be caused. Design an emergency stop switch outside of the product so it can be manually stopped.
- Do not use this product for the purpose of generating an alarm for injury to operators, breakdown of devices, or production halt. Design the system so that it can be hand-operated in case the product malfunctions.
- Do not use this product as a control unit on applications requiring extreme stability such as airplane control device, aerospace device, centralized data processing device, nuclear control system, medical life support system, etc.
- In case the product is used in transportation such as trains, vehicle, vessels, or warning devices for disasters and crimes, various safety devices and medical devices excluding life support system, you are required to design backup or failure provision system to secure reliability and stability.
- Even if the screen is black, the unit could still be turned on with a dead LCD backlight. When the operator touches a panel in this situation, the action could cause device's malfunction. Do not use product's graphic object for controlling safety devices such as emergency stop switches.

## Precautions for installation

- Please do not disassemble or modify the PC. It will void the warranty and may cause an electric shock.
- This version of the PC is not rated for flammable environments. Do not use this panel around flammable gases. It may cause an explosion.
- **Observe the warning**  
**WARNING: "DO NOT OPEN WHEN AN EXPLOSIVE GAS ATMOSPHERE IS PRESENT!"** during installation and maintenance.
- Use AGW14-23 for a power line of the PC. DC+ and DC- wires must be connected in order to operate the PC normally.

# Essential Safety Precautions



## Precautions for wiring

- Make sure to check if the device's power supply is turned off before wiring. Failure to do so may cause electric shock or damage to the device.
- Do not use power beyond the specified voltage range of the PC. Doing so may cause fire, electric shock or damage to the device.

## Precautions for grounding

- When grounding PC, make sure to separate it from other devices.
- If ground wires are close to each other, it may cause electric shock or damage to the device.
- Use wire which has grounding resistance lower than  $100\ \Omega$  and thicker than  $1\text{mm}^2$ . Follow your country's applicable standard.

## How to manage LCD breakage

- LCD panel contains strong irritants. If you touch liquid of LCD due to its breakage for any reason, flush your skin out for 15 minutes with the running water.
- If you get liquid of LCD in your eyes, flush your eyes out for 15 minutes with the running water and contact a physician.

## Maintenance

- The PC uses a lithium battery to back up the internal clock. Do not replace this battery yourself because it may cause an explosion. If the battery needs to be replaced, please contact your local service center.

# Essential Safety Precautions

## CAUTIONS

### Precautions for installation

- Be sure to securely connect all cable connectors to the PC. A loose connection may cause incorrect input or output.
- The PC shall only be used in an area of at least pollution degree 2, as defined in IEC 60664-1.
- The PC shall be installed on an enclosure to make sure maintaining minimum ingress protection of IP54 in accordance with IEC 60079-0.
- Transient protection of CIMON PC shall be provided at a level not exceeding 140 % of the rated voltage value, from the supply terminals to the equipment.
- Metallic enclosure of CIMON PC shall be rigidly connected with other product through installation. The product should be own an external connection facility for an equipotential bonding conductor with a cross-sectional area of at least 4 mm<sup>2</sup>. The external connection facility should protect against corrosion and connect reliably.
- The installation angle of CIMON PC is downward to vertical with the screen as the reference.

# Essential Safety Precautions

## CAUTIONS

### Precautions for wiring

- Frame Ground (FG) wires must be run individually from each unit to the master grounding terminal. DO NOT daisy chain the FG wires between devices.
- Correctly wire the panel, be sure that the rated voltage and terminal layout are within the designated range. If the voltage supplied differs from the rated voltage, or incorrect wiring or grounding is performed, it may cause a fire or unit malfunction and it will void the warranty.
- Make sure to tighten the screw with standard torque (0.5~0.6Nm). Loose connections may cause short, fire or malfunction.
- Be careful that metal debris do not enter the PC, they may cause a fire, panel damage malfunction.

### Precautions for unit disposal

- When this unit is disposed of, it should be done so according to your country's regulation for similar types of industrial waste

# General Safety Precautions

- Do not strike the touch panel with a hard or pointed object, or press on the touch panel with too much pressure, since it may damage the touch panel or the display.
- Do not install the PC where the ambient temperature exceeds the allowed range. Doing so may cause the PC to malfunction or shorten product lifespan.
- Do not restrict or limit naturally occurring rear-face ventilation of the PC, or storing or using the PC in an environment that is too hot.
- Do not use the PC in areas where large, sudden temperature changes can occur. These changes can cause condensation to form inside the unit, possibly causing the unit to malfunction.
- Do not allow water, liquids, metal or charged particles to enter the PC, since they can cause either a PC malfunction or an electric shock.
- Do not store or use the PC in direct sunlight, or in excessively dusty or dirty environments. Do not store or use the PC where strong jolting or excessive vibration can occur.
- Do not store or use the PC where chemicals (such as organic solvents, etc.) and acids can evaporate, or where chemicals and acids are present in the air.
- Do not use paint thinner or organic solvents to clean the PC.
- Do not store LCD panel where the ambient temperature is lower than the its range. Doing so may cause congelation of liquid contained in LCD which result in damage to the product.
- Do not store LCD panel where the ambient temperature is higher than its range. Doing so may cause the liquid contained in LCD to become isotropic and unreduced.
- After turning the PC OFF, be sure to wait 20 seconds before turning it ON again. If the PC started too soon, it may not start up properly.
- Backup your PC project regularly to prepare for the unexpected accident.
- It is not recommended to update Windows by yourself. Please contact manufacturer for Windows Update.



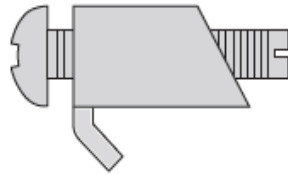
# Package Contents

The following items are contained in the package of the PC series. Before using the PC series, please confirm that all items listed below are present.

- PC



- Fastener



- 3P Connector



- 5P Connector



- Installation Guide

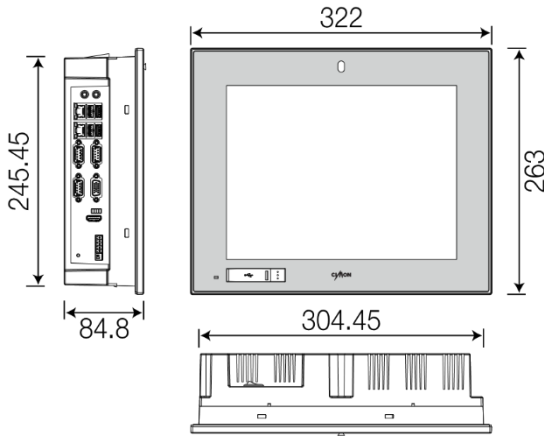


This unit has been carefully packed, with special attention to quality. However, should you find anything damaged or missing, please contact your local CIMON distributor immediately.

# 1. Dimension

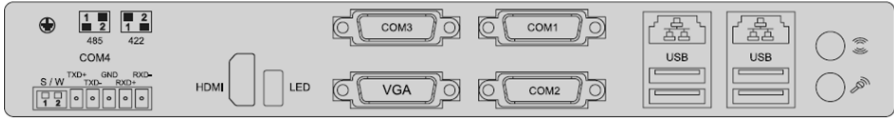
Unit: mm

- iNP312 / iNT312



## 2. Interfaces

### ▪ Outline



### ▪ COM1, COM2, COM3 : RS-232C

This interface is used to connect the PC to the host (PLC) via an RS-232C cable. Connector of RS-485/422 does not work with this COM1 port.

Connector	Pin No.	Name	Description
	1	DCD	Data Carrier Detect
	2	RD	Receive Data
	3	TD	Transmit Data
	4	DTR	Data Terminal Ready
	5	SG	Signal Ground
	6	DSR	Data Set Ready
	7	RTS	Request To Send
	8	CTS	Clear To Send
	9	RI	Ring Indicator

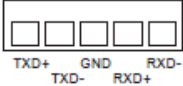


- Normal communication is not guaranteed when using USB connector as a communication port in ordinary times.
- Serial Port of the PC is not insulated.
- SG (Signal Ground) and FG (Frame Ground) are connected in the PC.
- Please be cautious not to short the circuit when connect external device to SG of the PC.

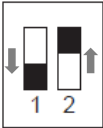

## 2. Interfaces

### ▪ COM4: RS-422/485

This interface is used to connect the PC to the host (PLC) via an RS-422/485 cable.

Connector	Pin No.	Name	Description
	1	TXD+	Transmit Data +
	2	TXD-	Transmit Data -
	3	GND	Ground
	4	RXD+	Receive Data +
	5	RXD-	Receive Data -

Switch setting for RS-485 and RS-422

Type	Switch
RS-485	
RS-422	



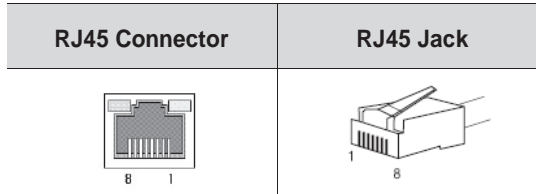
- In case of RS-485 connection, connect both TXD+ and TXD-.
- In RS-485 of the PC runs under auto toggle mode.
- To reduce the risk of damaging the RS-422 circuit, be sure to connect the GND terminal.

## 2. Interfaces

- Ethernet

- This interface complies with the IEEE802.3 for Ethernet.

Refer to the following figures for pin numbers and constructing cables.



### Direct Cable: Host ↔ HUB

Cable	No	Color	Color	No	Cable
	1	Orange/W	Orange/W	1	
	2	Orange	Orange	2	
	3	Green/W	Green/W	3	
	4	Blue	Blue	4	
	5	Blue/W	Blue/W	5	
	6	Green	Green	6	
	7	Brown/W	Brown/W	7	
	8	Brown	Brown	8	

### Crossover Cable: Host ↔ Host

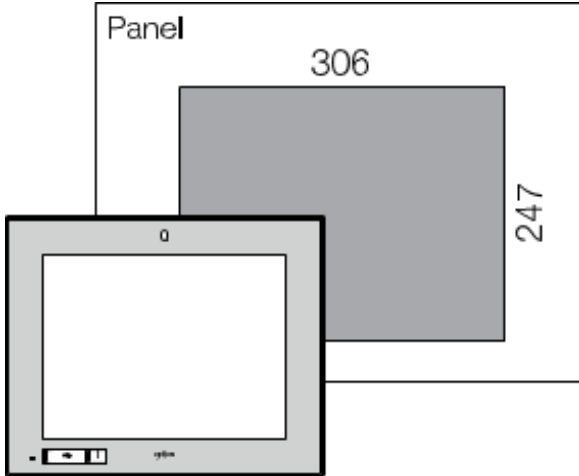
Cable	No	Color	Color	No	Cable
	1	Orange/W	Green/W	1	
	2	Orange	Green	2	
	3	Green/W	Orange/W	3	
	4	Blue	Blue	4	
	5	Blue/W	Blue/W	5	
	6	Green	Orange	6	
	7	Brown/W	Brown/W	7	
	8	Brown	Brown	8	

# 3. Installation

Insert PC into the panel cut from the front side, as shown below.

Unit: mm

- iNP312 / iNT312

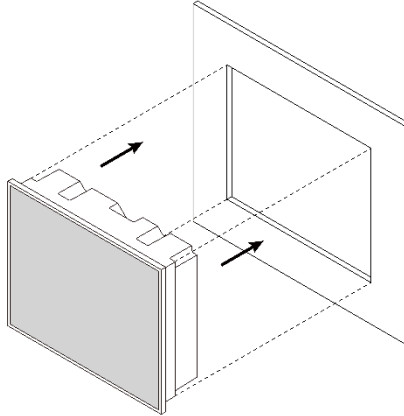


- Model name  
CM-i##-312-D-@-EX

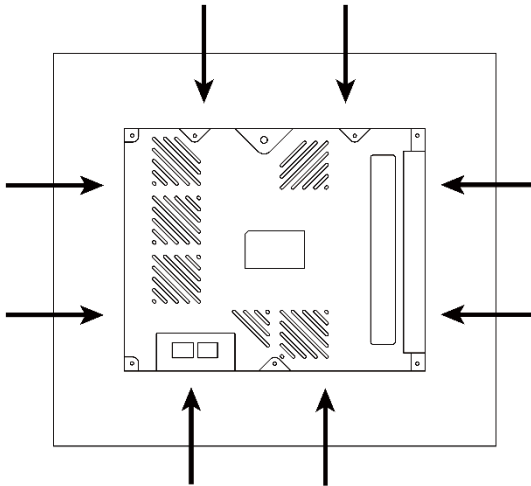
##		@	
NT	NP	Blank	N
Includes SCADA	No SCADA	Camera installed	No camera

# 3. Installation

- Insert PC into the panel cut from the front side, as shown below.

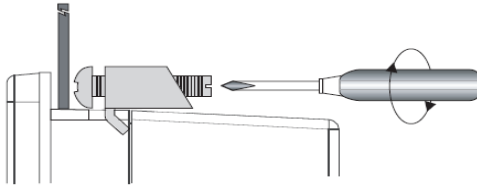
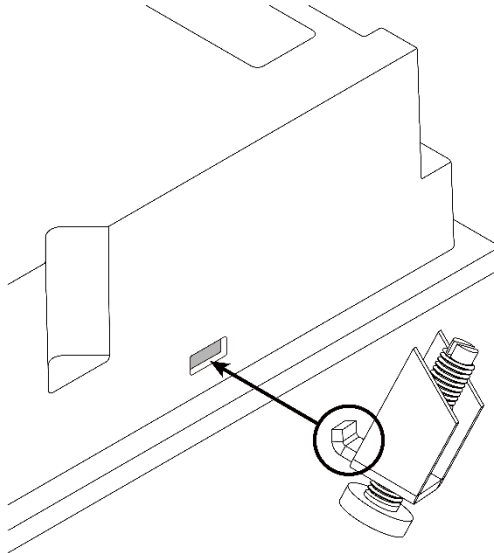


- Attach the installation fasteners from inside the panel. (Installation fasteners are included in the package.)  
Each position of slot for fastener is shown following figure.



## 3. Installation

- Insert each the hook of fastener into slot and tighten it with a screwdriver.



- Tightening the screws with too much force can damage the case of the PC.
- The necessary torque is 0.5Nm.
- A torque of front USB cover should be applied the 1~2kgf.cm. Beware that applying a torque out of range can be dangerous.
- All slots must be tightened with fasteners.



## 4. Wiring and Power Supply Caution


### WARNING

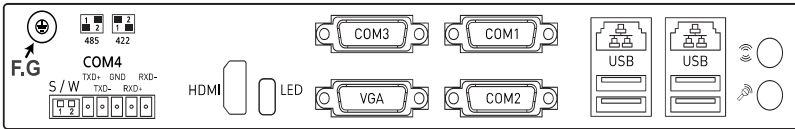
- To avoid an electric shock, when connecting the PC power cord terminals to the power terminal block, confirm that the PC power supply is completely turned OFF, via a breaker, or similar unit.
- Since there is no power switch on the PC unit, be sure to attach a breaker-type switch to its power cord.
- If the power supply voltage exceeds the GP's specified range, connect a voltage transformer.
- Between the line and the ground, be sure to use a low noise power supply. If there is still an excessive amount of noise, connect a noise reducing transformer.
- The power supply cord should not be bundled with or kept close to main circuit lines (high voltage, high current), or input/output signal lines.
- Connect a surge absorber to handle power surges.
- To reduce noise, make the power cord as short as possible.
- Please check if the product is DC type.
- Check the rated voltage of the product.
- If it is terminal block type, loosen the screw and put ring terminal, then tighten the screw.
- If it is terminal block connector type, be cautious that the power wire not to fall out of terminal block.



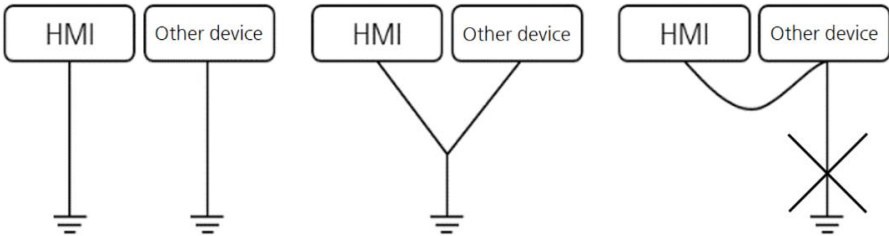
- To avoid shortage by loosen ring terminal, put insulating sleeve and check if the wires of ring terminal connected properly.
- Torque size of 0.5~0.6N.m are suitable to tighten screw.
- When connect FG terminal, ground wire before.

# 5. Grounding Caution

- When grounding to the rear face FG(Frame Ground) terminal of the PC, (on the Power Input Terminal Block), be sure to create an exclusive ground.
- Inside the PC unit, the SG (Signal Ground) and FG terminals are connected to each other.
- When connecting an external device to the PC with the SG terminal, ensure that no short-circuit loop is created when you setup the system.
- FG terminal is on the communication port side. Unfasten screw signed  and connect ring terminal.



- When grounding FG terminal, separate with other devices. Refer to the following figure.



① Exclusive grounding : Good

② Common grounding : Adequate

③ Common grounding : Prohibited



- If the operation error occurs because of grounding, separate with FG terminal.

## 6. Specification

Specification	CM-INP(iNT) 312-D-EX
CPU	Intel Baytrail-D Embedded Processor J1900 Quad Core 2.0GHz (FANLESS)
MEMORY	DDR3L SDRAM 4GB (Max. 8GB)
GRAPHIC	Integrated Intel HD Graphic
DISPLAY	12.1" TFT LCD
RESOLUTION	XGA (1024X768)
LCD BRIGHTNESS	700cd/m <sup>2</sup>
Backlight Unit	LED
TOUCH	Analog Resistive
STORAGE	SSD 120G Byte
EX. STORAGE	SATA X 1
SERIAL	RS232C : 3 Port RS422 / 485 : 1 Port
ETHERNET	Gigabit Ethernet / 2 Port
USB	Front: USB 2.0/1 Port Rear: USB 2.0/4 Port
Front Camera	VGA(640x480)
AUDIO	Line-out / 1 Port , MIC-in / 1 Port
EX. VIDEO	VGA / HDMI Up to 2 displays are supported for extended screen (Main 1, Additional 1)
OS (Selectable)	Windows 10 IoT Enterprise (Standard) Windows 10 Pro / Windows 10 Enterprise / Windows Embedded Standard 7
UTILITY PROGRAM	UWF(EWF : WIN7) / Winclon (Recovery System)
WEIGHT	4.2kg
POWER CONSUMPTION	22W
Fuse	125/250VAC, 10(15)A
POWER INPUT	DC24V
EX Certification	Ex nA IIC T6 Gc (for NEPSI), Ex eC IIC T6 Gc (for NEPSI)

\* NT model is a product which includes CIMON-SCADA.

\* EX model is an explosion proof product.

## 7. Environmental Specifications


Item	Specification
Ambient temperature	-20°C~ 40°C
Storage temperature	-20°C~ 60°C
Maximum surface temperature	71°C
Ambient humidity	10%RH~90%RH (below 29°C, No dew condensation)
Storage humidity	10%RH~90%RH (below 39°C, No dew condensation)
Environment condition	800hPa~1114hPa(2000m or less)
Dust	$\leq 0.1\text{mg}/\text{m}^3$
Pollution degree	$\leq$ Pollution degree 2
Operating ambience	Free from corrosive gas and excessive dust
Vibration resistance	$9.8\text{m}/\text{S}^2$ , 10Hz~25Hz in X,Y,Z (80min)
Noise resistance	Impulse, EFT/Burst, Surge, $\pm 2\text{KV}$ , 1us
Static discharge resistance	Contact Discharge 4kV (IEC61000-4-2)
	Air Discharge 8kV (IEC61000-4-2)

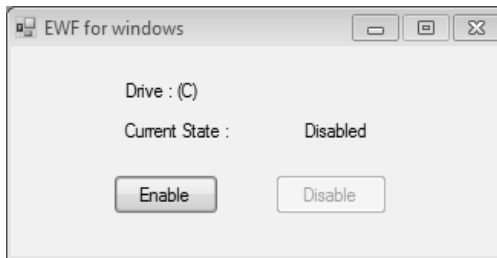
# 8. UWF: Unified Write Filter

<b>Supported OS</b>	Windows 10 Enterprise ,Windows 10 IoT Enterprise
	Windows Embedded Standard 7

C: drive of TOUCH/PPC is protected by UWF (or EWF). UWF is a function of Windows Embedded which protects the physical storage media from all write attempts.

(UWF for Windows10 Enterprise / EWF for Windows Embedded7)

- UWF intercepts all write attempts to a protected volume and redirects those write attempts to a RAM.
- When TOUCH/PPC reboots, all data stored in the RAM are cleared. C: drive is restored to the previous status.
- To enable/disable UWF, click [Start] and execute  XWFWin which is fixed on the Start menu. Right-click on the program and run as administrator.



- When you click [Enable], the system reboots and UWF is enabled.
- When you click [Disable], the system reboots and UWF is disabled.

In case of Windows Embedded 7, it does not reboot the system and disables the function immediately.



- To restore in Windows 10, run "UWF\_SETUP\_WIN8\_WIN10" as administrator and reset UWF ( or EWF) which is located in C:\XWF (or C:\CIMON\XWFWin). (WES7: "EWF\_SETUP\_WIN7")
- If icon is deleted, run "XWFWin" in C:\XWF (or C:\CIMON\XWFWin).
- Professional OS(DSP) which is not 'Embedded', does not support UWF (or EWF).

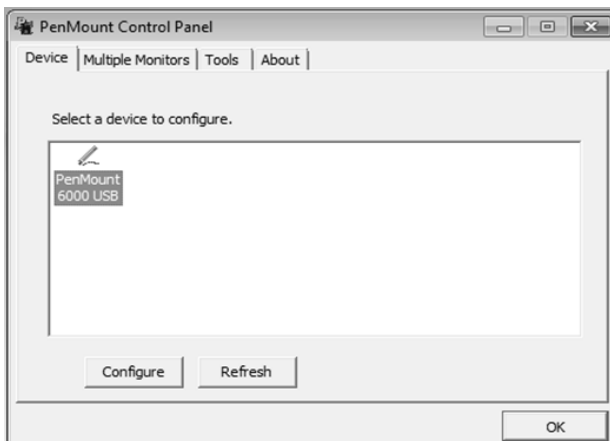
# 9. Calibration Setting

Calibration setting is to calibrate the touch panel when a touch problem occurs. Following is procedure of the touch calibration.

1. Click [Start] – [PenMount Windows Universal Driver] – [Utility] – [PenMount Control Panel] or click [PenMount Control Panel] icon in the Taskbar.

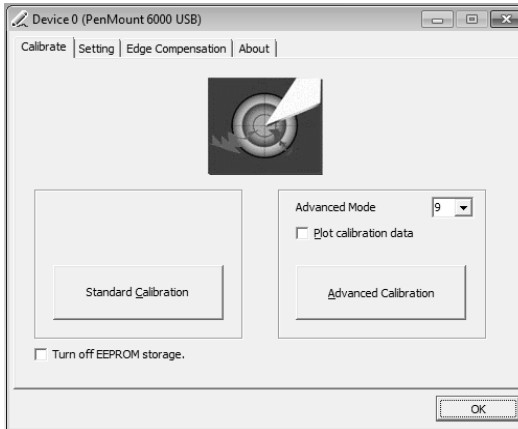


2. Double click "PenMount 6000 USB".



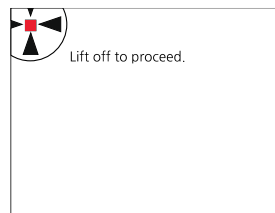
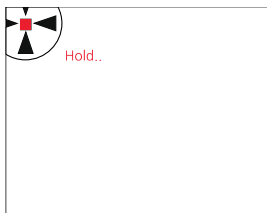
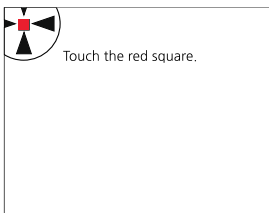
# 9. Calibration Setting

3. Click “Standard Calibration” to start calibration.



4. The red square pops up on the top left corner.

Touch the screen with pen and hold for a while. Then, move to the next red square.



Keep tapping the red point as instruction on the screen.

5. When the process is completed, click "OK" to save calibration setting.

6. Reboot the PC.

After the PC restarts, the calibration is completed.



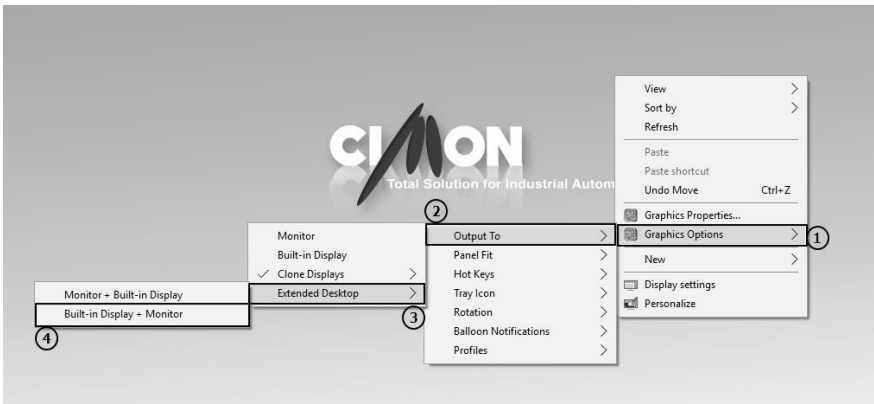
- Need to use USB mouse if there are difficulties in calibration setting when touch point is dislocated.
- “Advanced calibration” is used for more accurate setting.

# 10. Multi-Monitor Setting

To use multiple monitor with the PC, user must set up “Extended Desktop” as following steps.

1. Right click on the desktop screen.

Click [Graphics Options] → [Output To] → [Extended Desktop] → [Built-in Display + Monitor]



- When connecting to monitor, resolution might change. Check the resolution of product and monitor and configure at “Control Panel > Display > Resolution”



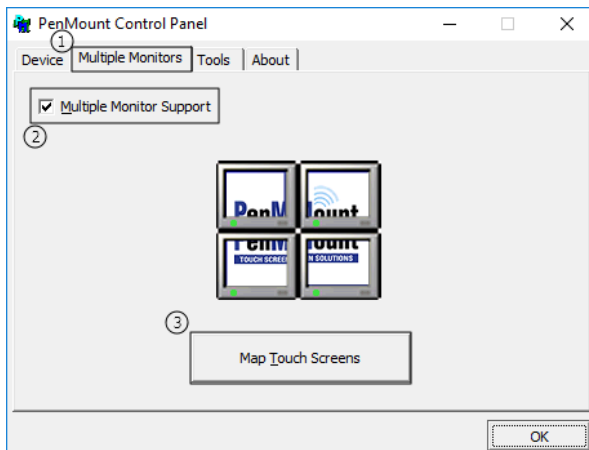
# 10. Multi-Monitor Setting

2. Open “PenMount Control Panel”

Click [Start] → [PenMount Windows Universal Driver] → [Utility] → [PenMount Control Panel]

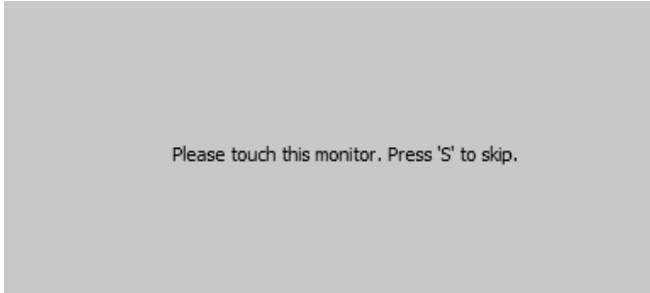


3. Click [Multiple Monitors] – [Multiple Monitor Support] - [Map Touch Screens].



## 10. Multi-Monitor Setting

4. If message "Please touch this monitor. Press 'S' to skip" pops up on the NP or NT monitor, tap the screen. Press 'S' if this message pops up on the extended monitor.

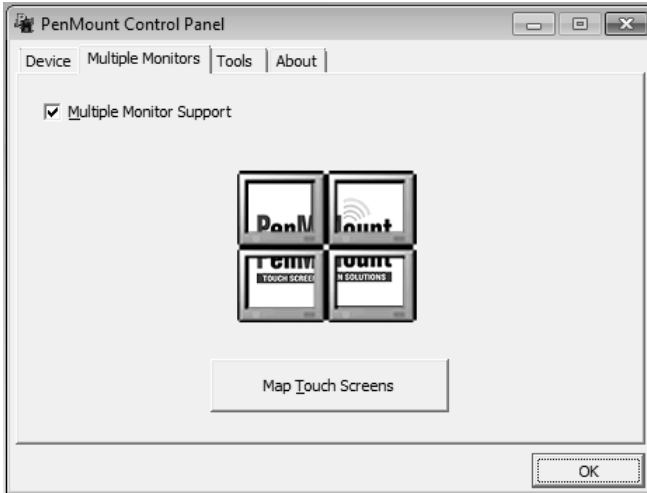


5. When you touch LCD screen, you will see following screen. Then, press 'S'.



# 10. Multi-Monitor Setting

6. Click “OK” to save setting.



- After setting the multi-monitor, touch screen might be out of calibration. In this case, please recalibrate. (Refer to page 21)

# Products Warranty

All Cimon products including hardware, software, and firmware (*collectively called "Products"*) carry a **one-year warranty** against defects in materials and workmanship beginning from the date of product receipt from seller or its appointed distributor. If a product proves defective in materials and workmanship within one year from the date of purchase, we will replace or repair it. **Products returned under warranty after 30 days may be replaced with refurbished or remanufactured goods at Cimon's discretion.** Cimon makes no representation or warranty, express or implied, that the operation of the Products will be uninterrupted or error free, or that the functions contained therein will meet or satisfy buyer's intended use or requirements. **Repaired or replaced Products provided as a result of this warranty are warranted for a period of six (6) months from the shipment to buyer or the remainder of the original warranty term for that particular product, whichever is longer.** Cimon's standard policy is that all customers are responsible for freight charges to Cimon when returning products under the warranty return policy.

This warranty will be void if Products date codes or serial numbers are removed or defaced. Warranties do not apply to products that have been subjected to abnormal use, abnormal conditions, improper storage, exposure to moisture or dampness, unauthorized modifications, unauthorized repair, misuse, neglect, accident, alteration, improper installation or other acts which are not the fault of Cimon, including damage caused in shipping. Our warranty also does not apply to any product that has been damaged by external causes such as fire, flood, sand, dirt, lightning, acts of God, battery leakage, theft, blown fuses, improper use of any electrical source or connection to product not recommended in writing for interconnection by Cimon.

In no event will Cimon be liable, whether in contract, tort or under any other legal theory, for lost profits or revenues, loss of use or similar economic loss, for any indirect, special, incidental, consequential, punitive or similar damages arising out of or in connection with any products including non-conforming products, or for any third party claims against you relating to the products, even if we have been advised of the possibility of such claim. **In no event will our monetary liability in respect of any product exceed the purchase price that you paid for it.**

To minimize the risk of potential safety problems, you should follow all applicable local and national codes that regulate the installation and operation of your equipment. These codes vary from area to area and usually change with time. It is your responsibility to determine which codes should be followed, and to verify that the equipment, installation and operation is in compliance with the latest revision of these codes.

# Products Warranty

## **CIMON SOFTWARE AND HARDWARE (COLLECTIVELY REFERRED TO AS, "PRODUCTS") LICENSE DISCLAIMER AND LIMITATION OF WARRANTIES**

YOUR USE OF ANY CIMON PRODUCTS AND CONTENT ACCESSIBLE THROUGH THE PRODUCTS IS ENTIRELY AT YOUR OWN RISK. EXCEPT AS DESCRIBED IN THIS AGREEMENT, THE PRODUCTS ARE PROVIDED "AS IS." TO THE MAXIMUM EXTENT PERMITTED BY APPLICABLE LAW, CIMON, ITS AFFILIATES, AND ITS THIRD PARTY SERVICE OR DATA PROVIDERS, LICENSORS, DISTRIBUTORS OR SUPPLIERS (COLLECTIVELY REFERRED TO AS, "SUPPLIERS") DISCLAIM ALL WARRANTIES, EXPRESS OR IMPLIED, INCLUDING ANY WARRANTY THAT THE PRODUCTS ARE FIT FOR A PARTICULAR PURPOSE, TITLE, MERCHANTABILITY, DATA LOSS, NON-INTERFERENCE WITH OR NON- INFRINGEMENT OF ANY INTELLECTUAL PROPERTY RIGHTS, OR THE ACCURACY, RELIABILITY, QUALITY OR CONTENT IN OR LINKED TO THE PRODUCTS.

CIMON AND ITS AFFILIATES AND SUPPLIERS DO NOT WARRANT THAT THE PRODUCTS ARE SECURE, FREE FROM BUGS, VIRUSES, INTERRUPTION, ERRORS, THEFT OR DESTRUCTION. FURTHER, CIMON DOES NOT WARRANT ACCESS TO THE INTERNET OR TO ANY OTHER SERVICE, CONTENT OR DATA TRANSMITTED THROUGH THE PRODUCTS. IF THE EXCLUSIONS FOR IMPLIED WARRANTIES DO NOT APPLY TO YOU, ANY IMPLIED WARRANTIES ARE LIMITED TO 60 DAYS FROM THE DATE OF PURCHASE OR DELIVERY OF THE PRODUCTS, WHICHEVER IS SOONER.

EQUIPMENT DAMAGE OR SERIOUS INJURY TO PERSONNEL INCLUDING DEATH CAN RESULT FROM THE FAILURE TO FOLLOW ALL APPLICABLE CODES AND STANDARDS INCLUDING ENGINEERING STANDARDS. CIMON DOES NOT ASSUME ANY RESPONSIBILITY FOR YOUR PRODUCT DESIGN, INSTALLATION OR OPERATION.

CIMON LTD AND ITS AFFILIATES AND SUPPLIERS DISCLAIM ANY REPRESENTATIONS OR WARRANTIES THAT YOUR USE OF THE PRODUCTS WILL SATISFY OR ENSURE COMPLIANCE WITH ANY LEGAL OBLIGATIONS OR LAWS OR REGULATIONS.

LIMITATION OF LIABILITY AND INDEMNITY. TO THE MAXIMUM EXTENT PERMITTED BY APPLICABLE LAW, THE ENTIRE LIABILITY OF CIMON, AND ITS AFFILIATES AND SUPPLIERS FOR ALL MATTERS OR CLAIMS RELATING TO THIS AGREEMENT SHALL BE LIMITED TO THE AMOUNT YOU PAID FOR THE PRODUCTS DURING THE TWELVE (12) MONTHS PRIOR TO SUCH CLAIM.

THE STATUTE OF LIMITATIONS FOR FILING A CLAIM SHALL BE LIMITED TO THE SHORTER OF TWELVE MONTHS, OR THE SHORTEST PERIOD ALLOWED UNDER APPLICABLE LAW.

# Products Warranty

SUBJECT TO APPLICABLE LAW, CIMON AND ITS AFFILIATES AND SUPPLIERS ARE NOT LIABLE FOR ANY OF THE FOLLOWING: (A) INDIRECT, SPECIAL, INCIDENTAL, PUNITIVE OR CONSEQUENTIAL DAMAGES; (B) DAMAGES RELATING TO FAILURES OF TELECOMMUNICATIONS, THE INTERNET, ELECTRONIC COMMUNICATIONS, CORRUPTION, SECURITY, LOSS OR THEFT OF DATA, VIRUSES, SPYWARE, LOSS OF BUSINESS, REVENUE, PROFITS OR INVESTMENT, OR USE OF SOFTWARE OR HARDWARE THAT DOES NOT MEET CIMON SYSTEM REQUIREMENTS. THE ABOVE LIMITATIONS APPLY EVEN IF CIMON AND ITS AFFILIATES AND SUPPLIERS HAVE BEEN ADVISED OF THE POSSIBILITY OF SUCH DAMAGES AND/OR THE POSSIBILITY OF DAMAGES GREATER THAN THE LIMITATION ABOVE. THIS AGREEMENT SETS FORTH THE ENTIRE LIABILITY OF CIMON, ITS AFFILIATES AND YOUR EXCLUSIVE REMEDY WITH RESPECT TO THE SOFTWARE AND ITS USE.

THE PARTIES FURTHER AGREE THAT THE APPLICABLE LAW AND VENUE FOR ANY DISPUTED ARE THE LAWS OF CALIFORNIA. TO THE EXTENT ALLOWED BY APPLICABLE LAW, ANY CLAIMS SHALL BE BROUGHT IN LOS ANGELES CALIFORNIA AND CALIFORNIA LAW SHALL APPLY. THE CALIFORNIA VERSION OF THE UCC IS THE PREFERRED LAW TO BE APPLIED TO ANY WARRANT AND RELATED CLAIMS.

# MEMO

**CIMON CO., LTD**

**H.Q Address**

5F KDT B/D, #48, Beolmal-ro, Bundang-gu, Seongnam-si,  
GyeongGi-do, Korea, 463-836

**Tel.** +82-31-778-3071

**USA**

Cimon Inc. 2538 Anthem Village Dr. #110 Henderson,  
NV89052

**Tel.** 213 384-8703

**Homepage :** [www.cimon.com](http://www.cimon.com)