

eXT2 SERIES



10-Inch eXT2 HMI

The 10" eXT2 Series Xpanel HMI combines a high-resolution display, faster processing power, and a slim, durable design tailored for industrial applications. Built for demanding environments, it offers robust performance and reliability. The Advanced (DF) model adds extra connectivity and rugged protection, ideal for versatile, high-demand use.

Base: CM-eXT2-10W-R-DE

Advanced: CM-eXT2-10W-R-DF

High-Brightness: CM-eXT2-10W-RH-DF

Product Highlights

- Wide operating temperature (-20 - +70 °C)
- High resolution, wide-screen display
- Quad-core high-speed processor
- 2GB of RAM; 8GB of Storage
- Slim profile & light weight
- Resistive touch screen
- 1 USB-C port, 2 serial ports, dual Ethernet ports, 1 line-out audio port, and 1 microSD card slot
- High brightness with UV coating
- Canvas software
- VNC Compatibility
- FDA 21 CFR Part 11 Compliance
- Embedded SQLite Database
- Email and text notifications

Supported Protocols

- **Client Device (Ethernet):** Allen Bradley EtherNet/IP, ODVA EtherNet/IP, Siemens S7, Mitsubishi MELSEC, Modbus TCP, OPC UA, Omron FINS, Proface GPEthernet, Fatek FBs, LSIS FEnet, CIMON PLC
- **Client Device (Serial):** Allen Bradley DF-1, Mitsubishi MELSEC, Modbus RTU, LSIS Cnet, Omron HostLink, Panasonic FP7, Yokogawa FA M3, CIMON PLC
- **Server Device (Ethernet):** EtherNet/IP, Modbus TCP, MQTT JSON Publisher, OPC UA
- **Server Device (Serial):** Modbus RTU



Model		Base	Advanced	High-Brightness
Part Number		CM-eXT2-10W-R-DE	CM-eXT2-10W-R-DF	CM-eXT2-10W-RH-DF
Enclosure	Front	Aluminum		
	Rear	Plastic	Aluminum	
LCD Size		10.1 inch Wide TFT Color		
Colors		16.7M		
Resolution		1280 x 800 WXGA (16:10)		
Effective Display Area (W xH)		216.96 x 135.60 mm		
PPI		149		
Backlight		LED		
Luminance		500 cd/m ²	1,200 cd/m ²	
Contrast Ratio		800:1		
Backlight Life		50,000 Hours		
Touch Panel		5 wire resistive		
Touch Panel Accuracy		Active Area Width (X) ±2%, Height (Y) ±2%		
Display Orientation		Landscape (Standard, 180°), Portrait (90°, 270°)		
Memory		2 GB LPDDR4		
Storage		8 GB eMMC		
SD Card		-	One MicroSD card slot	
COM 1		RS-422/485		
COM 2		RS-232C		
Ethernet		One 10/100/1000 port	Two 10/100/1000 ports	
USB Host		One Type A		
Tool Port		One USB-C Device		
Audio		-	One Line-out port	
Rated Voltage		24 VDC, Class 2		
Inrush Current		30 A maximum		
Power Consumption		15 W (Max: 16 W)	20 W (Max: 21W)	
Operating System		Embedded Linux		
Project Memory		250 MB		
User Memory		4 GB		
Realtime Clock		Realtime clock built into panel, backed up for 10 years at 25°C		
Acknowledgment Sound		Electronic buzzer		
Agency Approvals	UL	UL61010-1 / UL61010-2-201 (E231117)		
	CE	Electromagnetic Compatibility Directive 2014/30/EU (EMC)		
	FCC	The 47 CFR, Part2, Part15 and Part 18 Of FCC Requirement		
	KC	Registration of Broadcasting and Communication Equipments		
	Protection Class	Front: IP66, NEMA Type: 4X, 12	Front: IP68, NEMA Type: 4X, 12	

Environmental

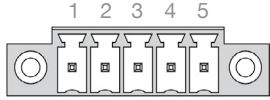
Model	Base	Advanced	High-Brightness
Operating Temperature	0 – 65°C (32 –149°F)	-20 – +70°C (-4 – +158°F)	
Storage Temperature	-25 – +75°C (-13 – +167°F)		
Operating Humidity	10–90% RH (below 29°C, not condensed)		
Storage Humidity	10–90% RH (below 39°C, not condensed)		

Pin Assignments

COM1: RS-422/485

PIN	Name	Description
1	RDB	Receive Data B
2	RDA	Receive Data A
3	GND	Ground
4	SDB	Send Data B
5	SDA	Send Data A

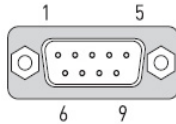
Connector



COM2: RS-232C

PIN	Name	Description
1	-	-
2	RD	Receive Data
3	TD	Transmit Data
4	-	-
5	SG	Signal Ground
6	-	-
7	RTS	Request to Send
8	CTS	Clear to Send
9	-	-

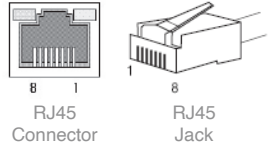
Connector



Ethernet

PIN	Description
1	TP0+
2	TP0-
3	TP1+
4	TP2+
5	TP2-
6	TP1-
7	TP3+
8	TP3-

Connector



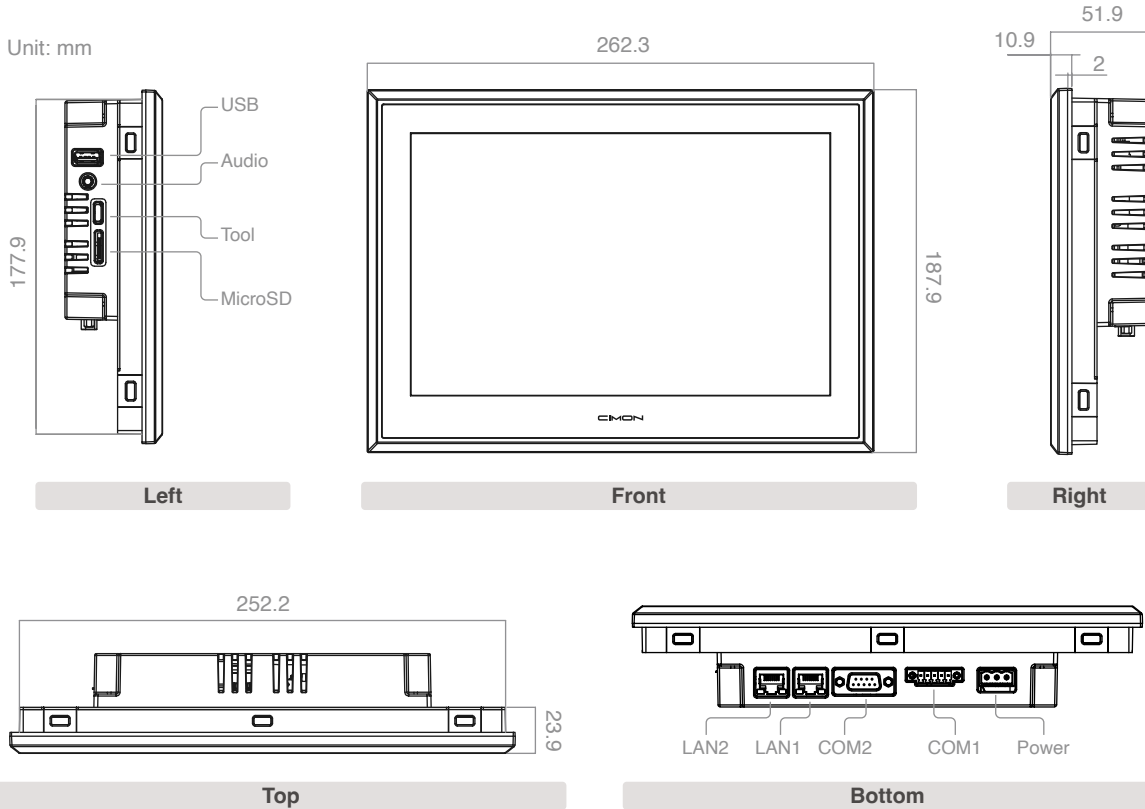
Physical

Model	Base	Advanced	High-Brightness
Dimensions	262.3 x 187.9 x 51.9 mm (10.32 x 7.39 x 2.04 in)		
Panel Cut	254 x 179 mm (10 x 7.04 in)		
Weight	1.4 Kg (3.09 lbs)	1.6 Kg (3.52 lbs)	
VESA (W x H)	N/A	75 mm x 75 mm	

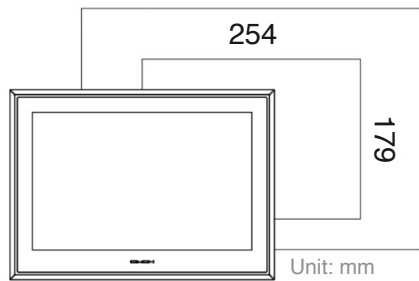
Accessories

Quantity	Description
10	Fastener
1	5-Pin Connector (RS-422/485)
1	Power Terminal Block
1	Installation Guide

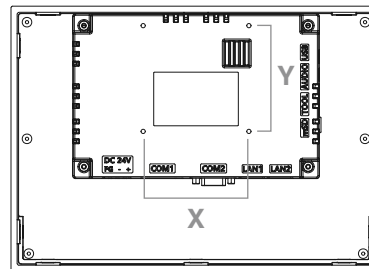
Spec Drawings



Installation



Panel Cut



Unit: mm
X: 75
Y: 75
Screw: M4 Max. 9

VESA Mount

Version: 25
Updated: 02.10.2025

sales@cimoninc.com
+1(800)300-9916

All CIMON products are backed by a 3-year warranty and our best-in-class technical support team.