

PRODUCT GUIDE

---

# CIMON

---

SCADA | IPC | HMI | PLC



# XPANEL · HMI NXT



CIMON's Xpanel human-machine interface (HMI) facilitates interaction between humans and machines. They undergo rigorous testing for high levels of shock, vibration, and temperature resilience. These devices operate efficiently in industrial environments and are packaged with many communication interfaces.



**EXPLOSION-PROOF**

Certified for Class 1 Division 2 areas. Ensures the safety of operators and environments where flammable gases, vapors, or combustible dusts might be present under abnormal conditions.



**WIDE-RANGE TEMPERATURE**

-20°C to 65°C (-4°F to 149°F). Integrate in the climate extremes.



**HARSH OUTDOOR PROTECTION**

UL Type 4X and 12 rated for optimal resistance to moisture, dust, and corrosion in harsh environments.



**CANVAS SOFTWARE**

Complimentary designer software used to program nXT and eXT Xpanels.



**SUNLIGHT READABLE AND CAPACITIVE**

Improved visibility, user experience, and versatility during daytime with direct sun. Multi-touch support, low power consumption, with bare minimum touch-pressure required.



**ENHANCED INGRESS PROTECTION**

IP68 rated. Enhanced dustproofing and waterproofing.



**RIGIDITY**

Full aluminum casting, providing durability, corrosion resistance, heat dissipation, and aesthetic appeal.



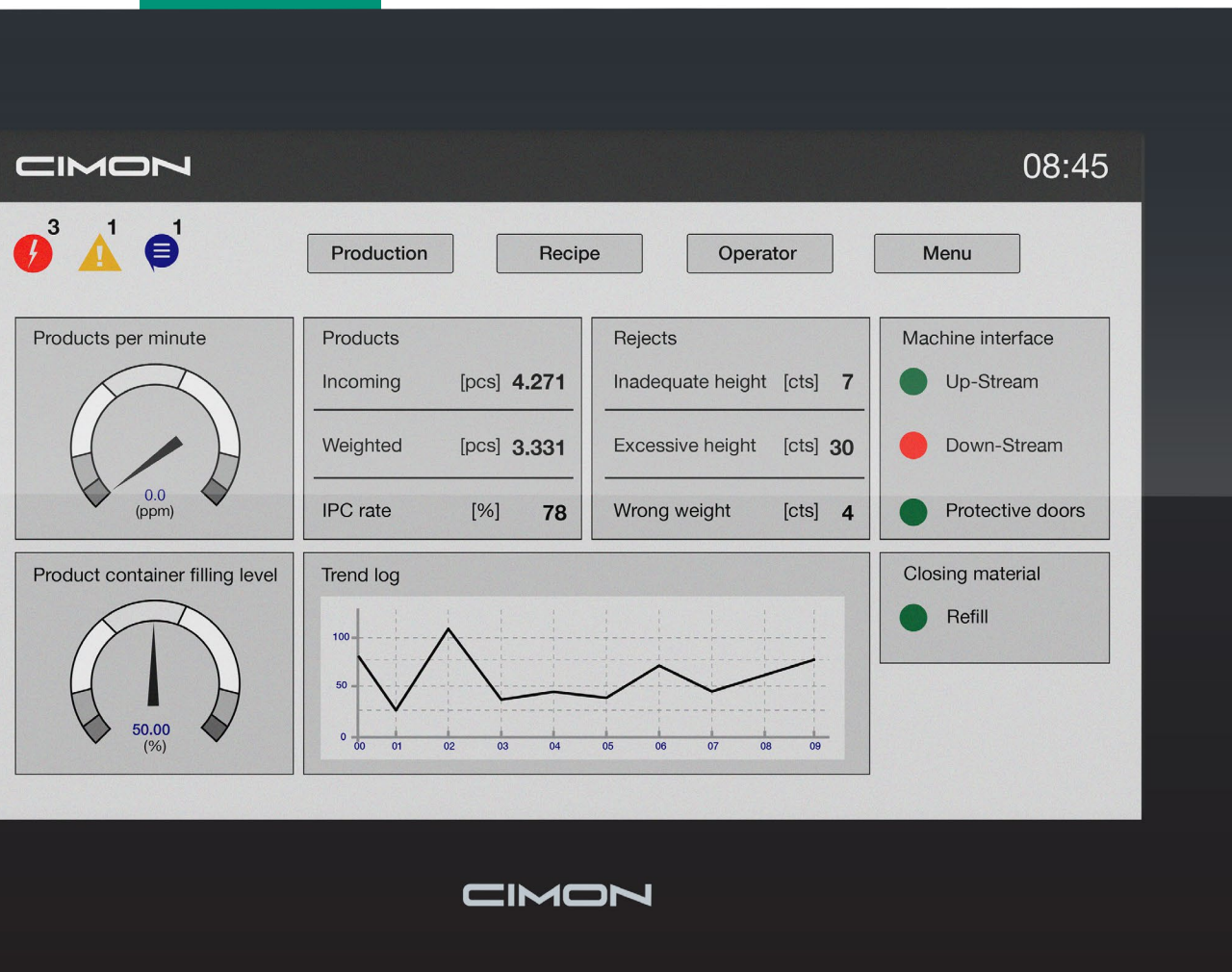
**EDGE COMPUTING**

This device is equipped with two Ethernet ports and is an excellent candidate for linking LAN data to the cloud.

nXT SERIES	
Product #	CM-nXT07-D
Software	Canvas
OS	Embedded Linux
Display size	7.0"
Resolution	800x480 (5:3)
Touch Screen	Capacitive Multi Touch
Input Voltage	24 VDC
Front Bezel	Aluminum
LAN	2 x Gigabit Ethernet (RJ45)
Serial	1 x RS232 (DB9M), 1 x RS422/485 (DB9M)
USB	1 x USB 2.0 (Type-A)
SD Card Port	1 x Slot
Audio	1 x Line Out



# XPANEL · HMI EXT



CIMON's Xpanel human-machine interfaces (HMI) facilitate interaction between humans and machines. They undergo rigorous testing for high levels of shock, vibration, and temperature resilience. These devices operate efficiently in industrial environments and are packaged with many communication interfaces.

## HUMAN-MACHINE INTERFACE



### HIGH-PERFORMANCE CPU

Enhances efficiency with a fast quad-core processor.



### RESISTIVE TOUCH SCREEN SIZE LINEUP

Available in 4", 7", 10", 12", or 15" to suit various applications.



### INDUSTRIAL ROBUSTNESS

FCC, CE, UL, cUL, KC, IP65, NEMA 4X, 12, 13.



### BACKLIGHT LIFE

Estimated 50,000 hours of usage from industrial-grade LCDs.



### FLEXIBLE INTERFACING

Includes 2 × Gigabit Ethernet, along with up to 3 × serial channels and up to 2 × USB 2.0 ports, and 1 × SD card slot.



### ENHANCED DISPLAY

Sharp XGA resolution display with up to 16.7M options in color.



### CANVAS SOFTWARE

Complimentary designer software used to program nXT and eXT Xpanels.



### EDGE COMPUTING

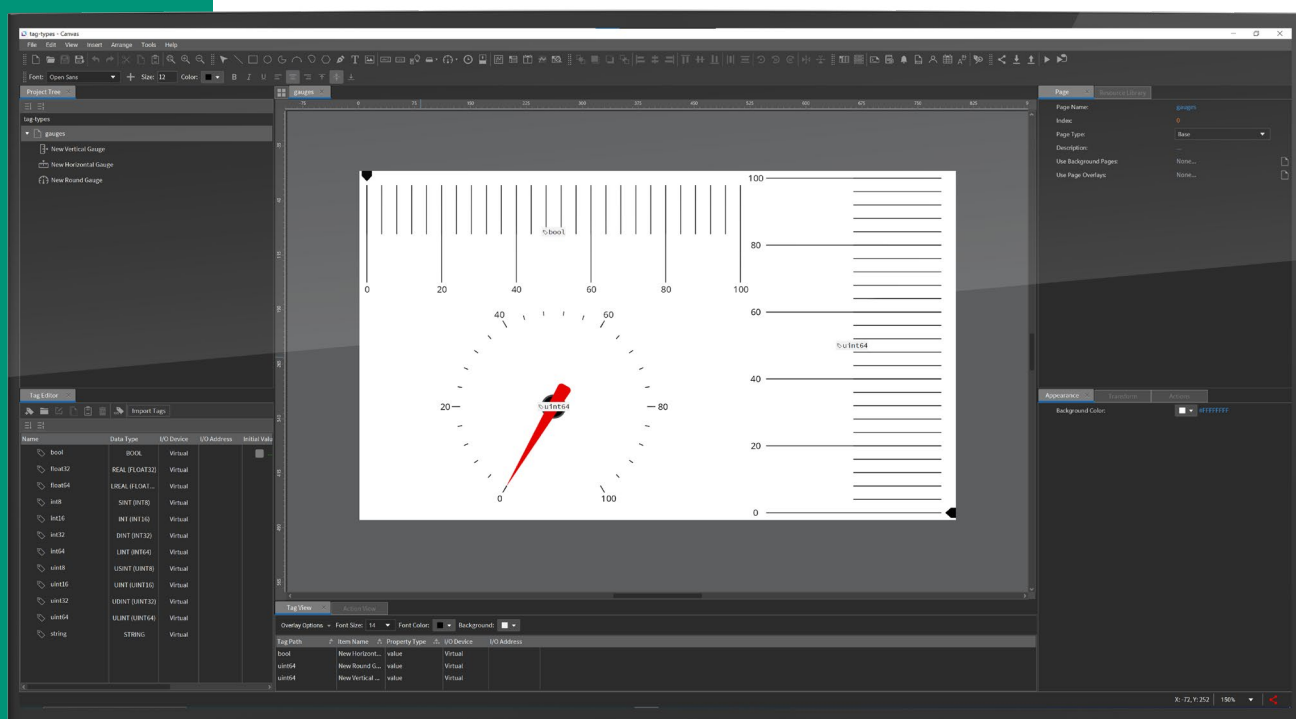
This device is equipped with two Ethernet ports and is an excellent candidate for linking LAN data to the cloud.

eXT SERIES					
Product #	CM-eXT04-D	CM-eXT07-D	CM-eXT10-H-D	CM-eXT12-H-D	CM-eXT15-D
Software	Canvas				
OS	Embedded Linux				
Display size	4.3"	7.0"	10.4"	12.1"	15.0"
Resolution	800×480 (5:3)		1024×768 (4:3)		
Touch Screen	Resistive Single Touch				
Input Voltage	24 VDC				
Front Bezel	Plastic		Aluminum		
LAN	1 × Gigabit Ethernet (RJ45)	2 × Gigabit Ethernet (RJ45)			
Serial	1 × RS232 (DB9M), 1 × RS422/485 (DB9M)		2 × RS232 (DB9M), 1 × RS422/485		
USB	1 × USB 2.0 (Type-A)		2 × USB 2.0 (Type-A)		
SD Card Port	-	1 × Slot			
Audio	-	1 × Line Out			



# CANVAS

## HMI SOFTWARE



A revolutionary HMI programming software designed for our new eXT and nXT series of Xpanel HMI displays. Boasting a sleek and modern appearance, this powerful and versatile platform simplifies the process of creating, editing, and managing HMI projects; making CIMON Canvas the perfect solution for industrial automation and many other process applications.



### CLOUD CONNECTIVITY

Evolve any application with cloud-based connectivity protocols such as OPC UA or MQTT.



### SYMBOL FACTORY

Thousands of graphics for various industries. SVG, GIF, PNG, JPG, and BMP support.



### COMMUNICATION DRIVERS

Supports a wide range of industry-standard protocols, including EtherNet/IP, S7, and Modbus.



### 360° OBJECT ROTATION

Dynamically change any object's rotational orientation within Canvas without third-party programs' assistance.



### SMART-BINDING

Drag-and-drop tags into objects for intuitive allocation to properties.



### MULTI-LANGUAGE

Translate any language with the accompanying font style.



### SECURITY

Protect project intellectual property and integrate project runtime permissions.



### AUDIT TRAIL

Ensure electronic records and signatures' integrity, security, and reliability in regulated industries with 21 CFR Part 11 compliance.



### AUTONOMOUS BEHAVIOR

Enable any application action or process autonomously with the integrated Javascript script engine.



### EMAIL NOTIFICATIONS

Receive alerts with applications via integrated SMTP, reducing the overall resources needed in the digital age.



### MULTI-DEVICE DEPLOYMENT

Expedite the application distribution or update by downloading to multiple Xpanel HMIs simultaneously.



### RECIPE

Store default application permutations or upload externally calibrated configurations to be saved for later use.



### SIMULATION

Generate proof of concept for any application with the embedded simulator.



### REMOTE PAGE CONTROL

Facilitate page change seamlessly from the control of an I/O device.